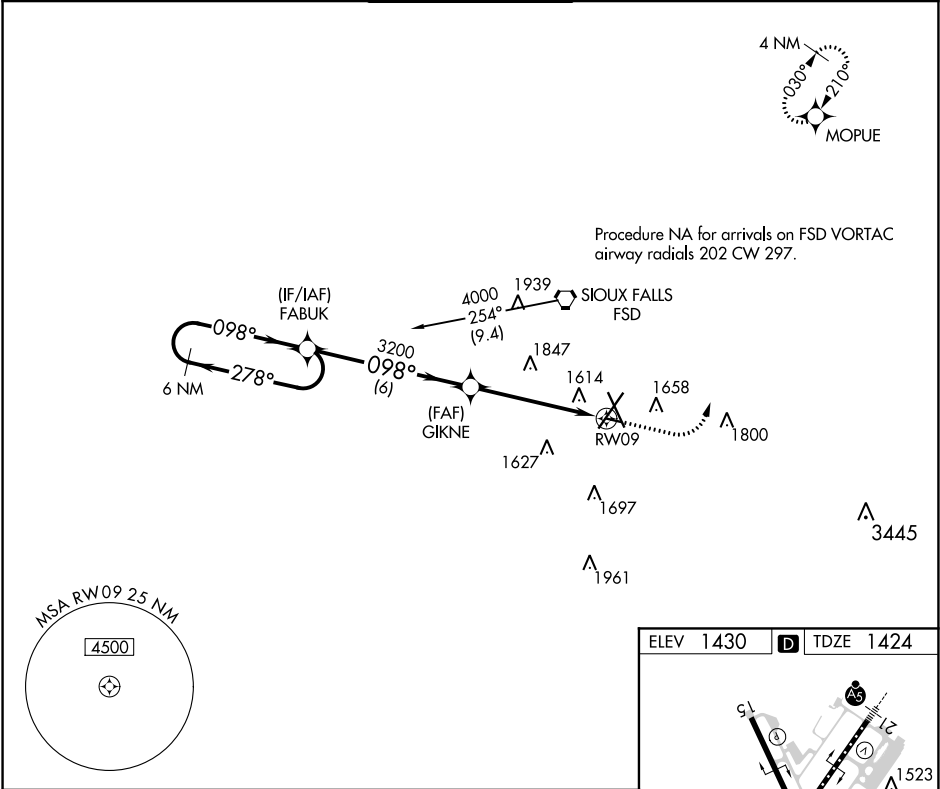


APP CRS 098°	Rwy Idg 3148 TDZE 1424 Apt Elev 1430
------------------------	---

RNAV (GPS) RWY 9

JOE FOSS FIELD (FSD)

RNP APCH.		MISSED APPROACH: Climb to 2500 then climbing left turn to 4000 direct MOPUE WP and hold.		
ASR Rwy 9 helicopter visibility reduction below ¾ SM NA.				
ATIS 126.6	SIOUX FALLS APP CON* 125.8 284.725	SIOUX FALLS TOWER* 118.3 (CTAF) 257.8	GND CON 121.9 348.6	UNICOM 122.95



6 NM Holding Pattern FABUK 4000 ← 278° / 098° →		2500 4000 MOPUE	
3200 3.27° TCH 40 6 NM 3.8 NM 1.2 NM to RWY09		RWY09 1470 899 X 130 3148 X 75 1523 TWR 1519 1567	
CATEGORY	A	B	C
LNAV MDA	1880-1	456 (500-1)	NA
CIRCLING	1960-1 530 (600-1)	1980-1 550 (600-1)	NA

NC-1, 31 DEC 2020 to 28 JAN 2021

NC-1, 31 DEC 2020 to 28 JAN 2021