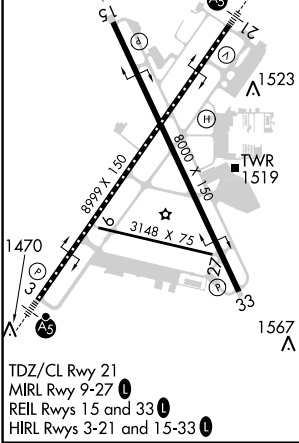
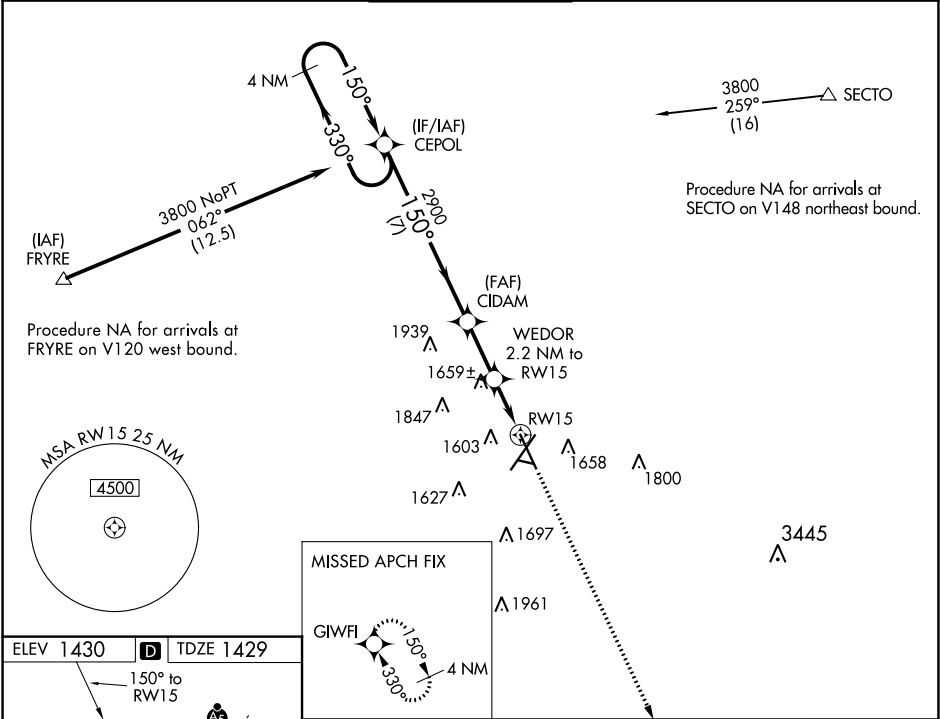


WAAS CH 90235 W15A	APP CRS 150°	Rwy Idg TDZE 1429 Apt Elev 1430
--	------------------------	---

RNAV (GPS) RWY 15

JOE FOSS FIELD (FSD)

<div><div><div>⚠</div><div>ASR</div><div>⚠ -31°C</div></div><div>For uncompensated Baro-VNAV systems, LNAV/VNAV NA below -21°C (-5°F) or above 54°C (130°F). DME/DME RNP-0.3 NA. Helicopter visibility reduction below ¾ SM not authorized.</div></div>	MISSED APPROACH: Climb to 3800 direct GIWFI and hold.		
ATIS 126.6	SIoux FALLS APP CON ★ 125.8 284.725	SIoux FALLS TOWER ★ 118.3 (CTAF) 257.8	GND CON 121.9 348.6
			UNICOM 122.95



MISSED APCH FIX		GIWFI	
4 NM		3800	
GP 3.00°		TCH 48	
CATEGORY		A	
LPV DA		1839-1½ 410 (500-1½)	
LNAV/VNAV DA		1906-1½ 477 (500-1½)	
LNAV MDA		1920-1 491 (500-1)	
CIRCLING		1980-1 550 (600-1)	