
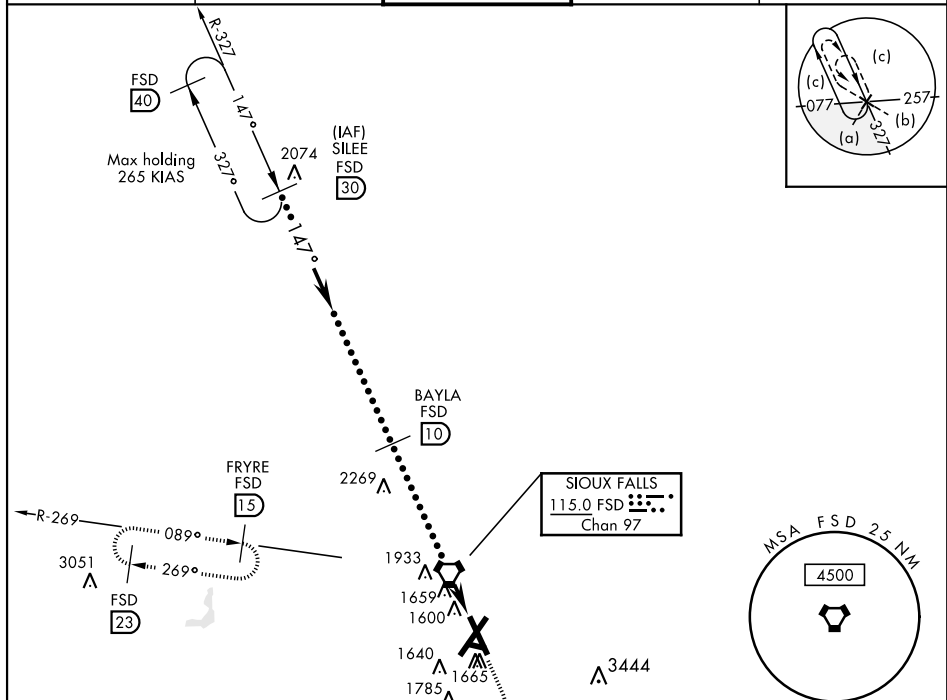


SIOUX FALLS, SOUTH DAKOTA

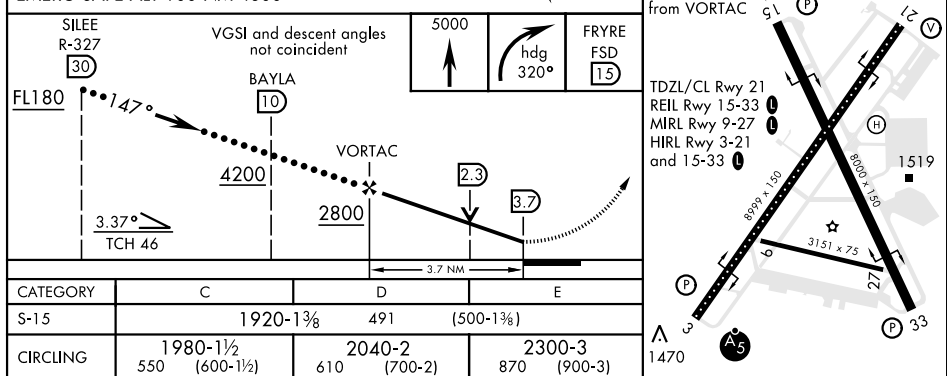
HI-TACAN RWY 15

VORTAC FSD 115.0 Chan 97	APCH CRS 147°	Rwy Idg 8000 THRE 1429 Arpt Elev 1430	JAL-396 [USAF]	SIoux FALLS/JOE FOSS FIELD (KFSD)
			MISSED APPROACH: Climb to 5000 then right turn via heading 320° and FSD R-269 to FRYRE 1.5 DME and hold.	

ATIS 126.6	SIOUX FALLS APP CON 125.8 126.9 353.6	SIOUX FALLS TOWER ★ 118.3 0 257.8	GND CON 121.9 348.6	ASR
---------------	--	--------------------------------------	------------------------	-----



EMERG SAFE ALT 100 NM 4600



SIOUX FALLS, SOUTH DAKOTA

43° 35' N-96° 44' W

SIOUX FALLS/JOE FOSS FIELD (KFSD)

Amdt 8B 22AUG13

HI-TACAN RWY 15