


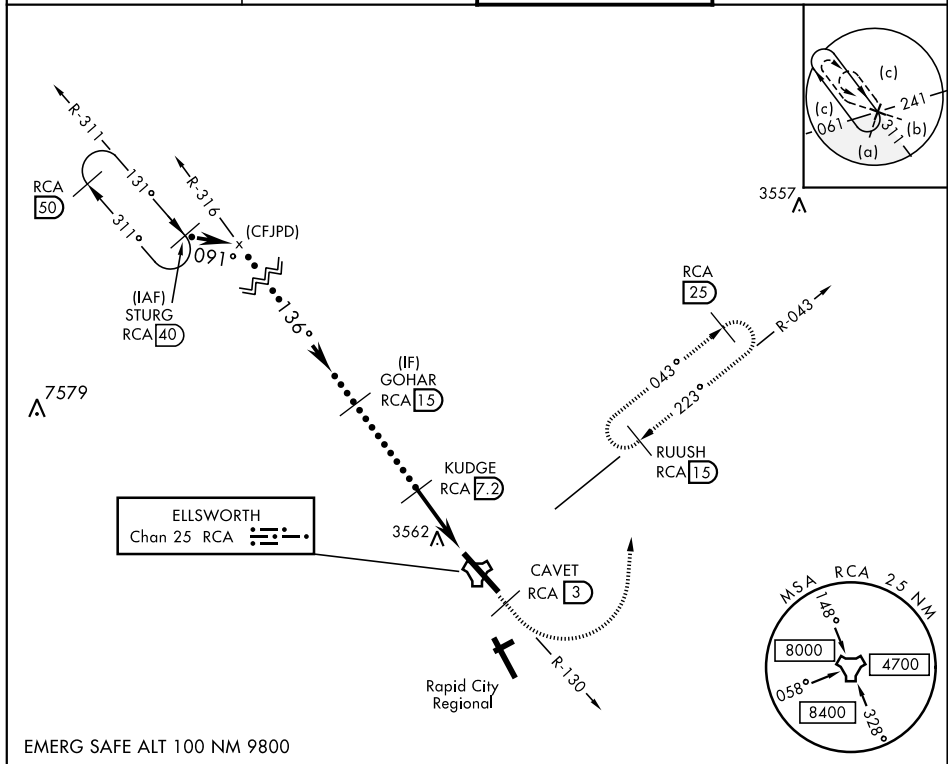
RAPID CITY, SOUTH DAKOTA

HI-TACAN Z RWY 13

TACAN RCA Chan <b>25</b>	APCH CRS <b>136°</b>	Rwy Idg <b>13,497</b> TDZE <b>3276</b> Arpt Elev <b>3276</b>	JAL-343 [USAF]	ELLSWORTH AFB (KRCA)
-----------------------------	-------------------------	--	----------------	----------------------

<p>▼ * When ALS inop, increase CAT CDE vis to 1% mile.</p> <p>** CAT E circling restricted to 28th BW aircraft only; 28th BW aircraft will remain within Class D airspace.</p>	<p>ALSF-1</p> 	<p>MISSED APPROACH: Track outbound RCA R-130 to 3 DME (CAVET), then turn left to join RCA R-043 to 1.5 DME (RUUSH) and hold. Maintain 6000.</p>
--	---	---

<p>ATIS ★</p> <p><b>120.625 269.9</b></p>	<p>ELLSWORTH APP CON</p> <p><b>119.5 259.1</b></p>	<p>ELLSWORTH TOWER ★</p> <p><b>126.05 253.5</b></p>	<p>GND CON</p> <p><b>121.8 275.8</b></p>
---	--	---	--



CATEGORY	C	D	E
S-13 *	3820/60	544	(600-1%)
CIRCLING **	3880-1 3/4 604 (700-134)	3980-2 1/4 704 (800-244)	4040-2 3/4 764 (800-234)

RAPID CITY, SOUTH DAKOTA

44°09'N-103°06'W

ELLSWORTH AFB (KRCA)

Amdt 1 15SEP16

HI-TACAN Z RWY 13