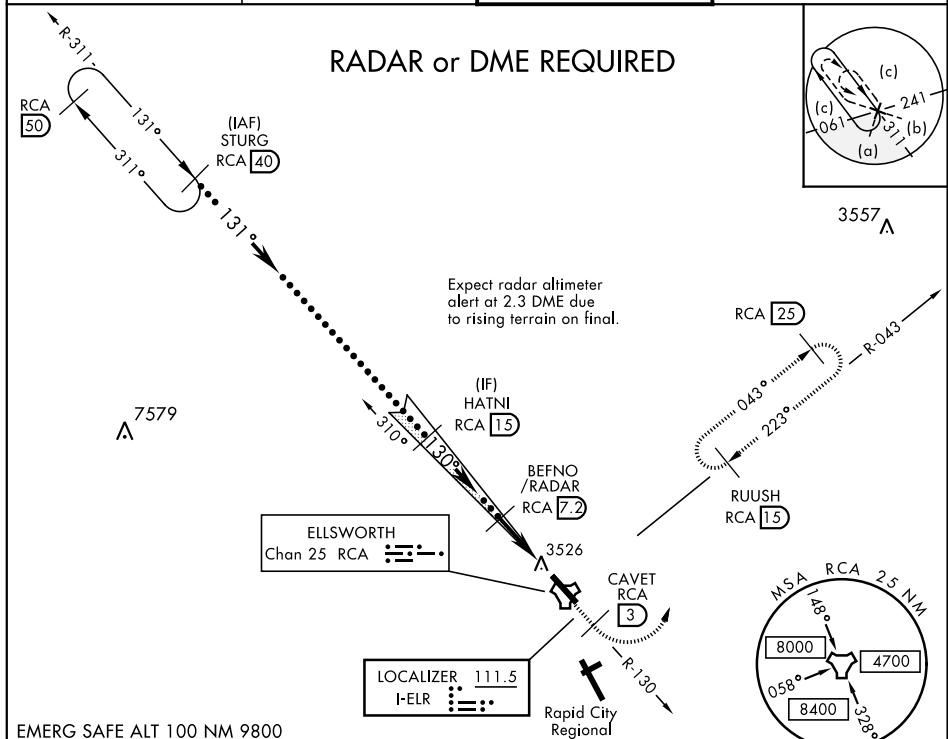


LOC I-ELR 111.5	APCH CRS 130°	Rwy Ldg 13,497 TDZE 3276 Arprt Elev 3276	JAL-343 [USAF]	ELLSWORTH AFB (KRCA)
--------------------	------------------	--	----------------	----------------------

<p>★ When ALS inop, increase RVR to 40 and vis to ¼ mile. ★★ When ALS inop, increase vis to 1 ½ miles. ★★★ CAT E circling restricted to 28 BW aircraft only; 28 BW aircraft will remain within Class D airspace.</p>	<p>ALSF-1 </p>	<p>MISSED APPROACH: Track outbound RCA R-130 to 3 DME (CAVET), then turn left to join RCA R-043 to 15 DME (RUUSH) and hold. Maintain 6000.</p>
---	--	--

<p>ATIS ★ 120.625 269.9</p>	<p>ELLSWORTH APP CON 119.5 259.1</p>	<p>ELLSWORTH TOWER ★ 126.05 253.5</p>	<p>GND CON 121.8 275.8</p>
--	---	--	---



<p>STURG 40 FL 190 Intep Lczt 6000 GS 3.00° TCH 50</p>	<p>HATNI 15 6000 130°</p>	<p>BEFNO /RADAR 7.2 5200 5.3 NM</p>	<p>CAVET RCA R-130 3 6000 RCA R-043 3 5 NM</p>	<p>RUUSH RCA 15 6000</p>	<p>ELEV 3276 TDZE 3276 130° 5.8 NM from FAF 13,497' x 300 0.7% DOWN TWR HIRL Rwy 13-31 FAF to MAP 5.3 NM</p>
<p>CATEGORY</p>	C	D	E		
<p>S-ILS 13 ★</p>	3476/24	200	(200-½)		
<p>S-LOC 13 ★★</p>	3780/55	504	(600-1)		
<p>*** CIRCLING</p>	3880-1 ¼ 604 (700-1 ¼)	3980-2 ¼ 704 (800-2 ¼)	4040-2 ¾ 764 (800-2 ¾)		
<p>Knots</p>	120	140	160	180	200
<p>Min:Sec</p>	2:39	2:16	1:59	1:46	1:35