

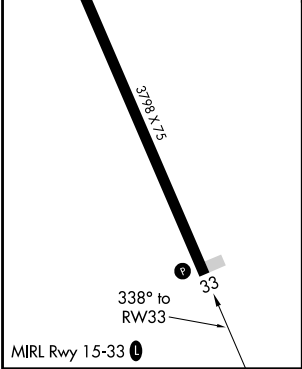
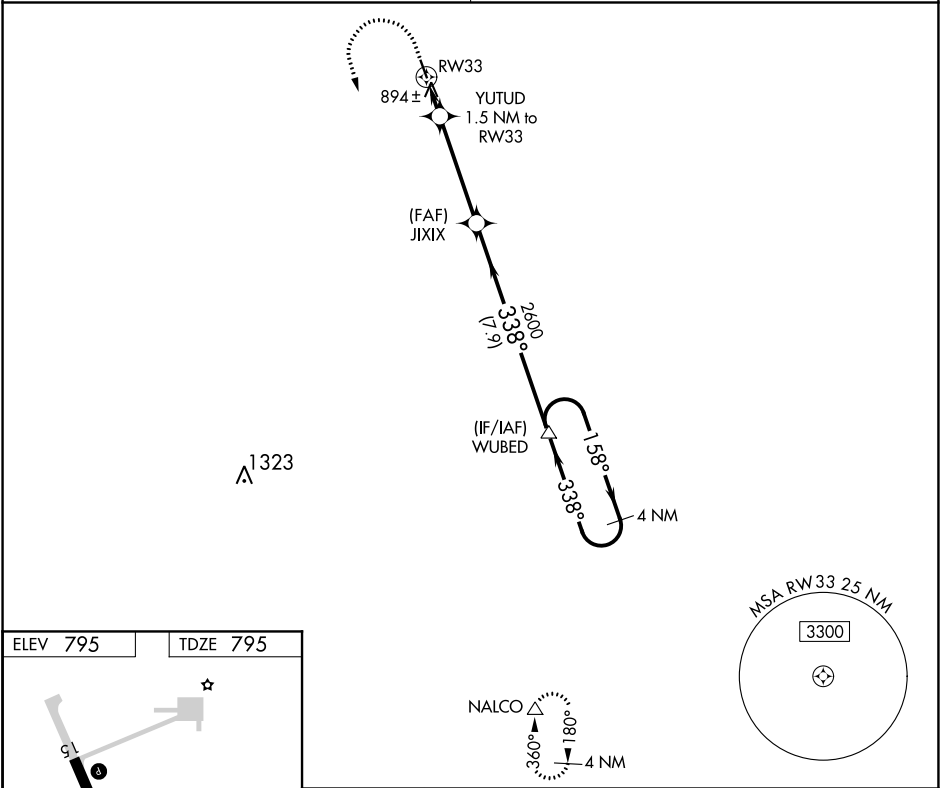
APP CRS	Rwy Idg	3798
338°	TDZE	795
	Apt Elev	795

RNAV (GPS) RWY 33

PEMBINA MUNI (PMB)

RNP APCH.	MISSED APPROACH: Climb to 1200 then climbing left turn 2600 direct NALCO and hold.
NA	Procedure NA at night. Obtain local altimeter setting on CTAF; when not received use Hallock altimeter setting; increase all MDA 60 feet and LNAV Cat C visibility ¼ SM. Rwy 33 helicopter visibility reduction below 1 SM NA.

MINNEAPOLIS CENTER 132.15 269.6	UNICOM 122.8 (CTAF) 0
------------------------------------	--------------------------



1200	2600	NALCO	VGSI and RNAV glidepath not coincident (VGSI Angle 3.00/TCH 26).	
↑	↶	△	JIXIX	WUBED
YUTUD 1.5 NM to RW33		3.00° TCH 40	338°	158°
RW33		2600	338°	2600
1300		4 NM Holding Pattern		
1.5		4.1 NM	7.9 NM	
CATEGORY	A	B	C	D
LNAV MDA	1160-1 365 (400-1)			NA
CIRCLING	1200-1 405 (500-1)	1300-1 505 (600-1)	1300-1½ 505 (600-1½)	NA

NC-1, 31 DEC 2020 to 28 JAN 2021

NC-1, 31 DEC 2020 to 28 JAN 2021