

APP CRS <b>301°</b>	Rwy Idg TDZE Apt Elev	<b>10000</b> <b>823</b> <b>842</b>
------------------------	-----------------------------	--

## RNAV (RNP) Y RWY 30L

MINNEAPOLIS-ST PAUL INTL/WOLD-CHAMBERLAIN (MSP)

**T** For uncompensated Baro-VNAV systems, procedure NA below -19°C (-2°F) or above 54°C (130°F). GPS required. Simultaneous approaches authorized with Rwy 30R and ILS V RWY 35 (CONVERGING).

ALSF-2



**MISSED APPROACH:** Climb to 3000 on track 301° to WOXEB and hold.

D-ATIS  
ARR **135.35 239.275**  
DEP **120.8**

MINNEAPOLIS APP CON  
**118.725 335.65** (Rwy 35)  
**119.3 335.65** (12L-30R, 4-22, 17)  
**126.95 335.65** (12R-30L)

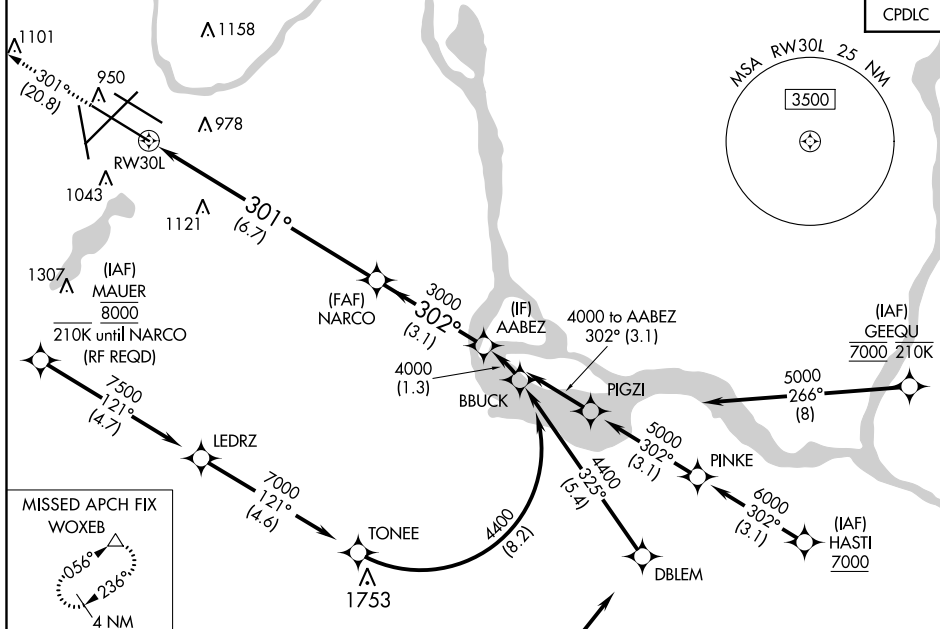
MINNEAPOLIS TOWER  
**123.675 273.55**(17-35)  
**123.95 273.55**(12L-30R)  
**126.7 273.55**(12R-30L, 4-22)

GND CON	
N 121.8	348.6
S 121.9	348.6
W 127.925	348.6

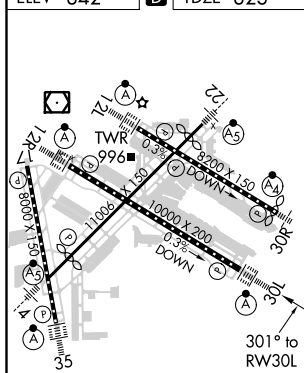
CLNC DEL

133.2

CPDLC



FILEV 842	<b>D</b>	TDZFE 823
-----------	----------	-----------



HIRL all Rwys  
REIL Rwy 17  
TDZ/CL Rwys 12L, 12R, 30L, and 35

<p>3000</p> <p>↑</p> <p>tr 301°</p>	<p>WOXEB</p> <p>△</p>	<p>VGSI and RNAV glidepath not coincident. (VGSI Angle 3.00°/TCH 78).</p>			
		<p>NARCO</p> <p>3000</p>	<p>AABEZ</p> <p>4000</p>	<p>301°</p> <p>302°</p> <p>3000</p>	<p>GP 3.00° TCH 55</p>
<p>CATEGORY</p>	<p>A</p>	<p>B</p>	<p>C</p>	<p>D</p>	

RNP 0.30 DA	1150/30 327 (400- $\frac{5}{8}$ )
-------------	-----------------------------------

	AUTHORIZATION REQUIRED
--	------------------------

**AUTHORIZATION REQUIRED**

MINNEAPOLIS, MINNESOTA

Amdt 1 05JAN17

MINNEAPOLIS-ST PAUL INTL /WOLD-CHAMBERLAIN (MSP)

44°53'N-93°13'W

RNAV (RNP) Y RWY 30L