

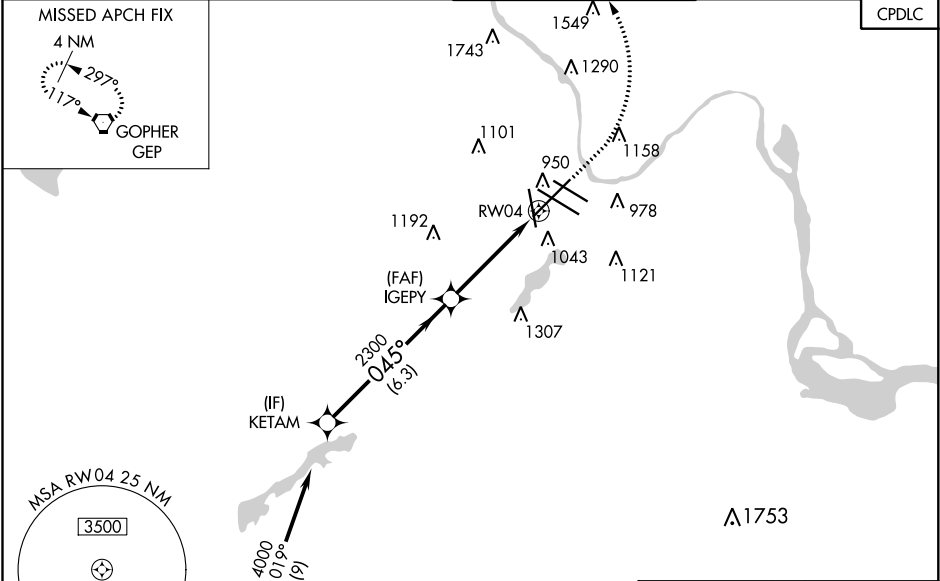
WAAS CH <b>72931</b> <b>W04A</b>	APP CRS <b>045°</b>	Rwy Idg <b>9456</b> TDZE <b>832</b> Apt Elev <b>842</b>
--	------------------------	---

RNAV (GPS) RWY 4

MINNEAPOLIS-ST PAUL INTL/WOLD-CHAMBERLAIN (MSP)

RNP APCH.	MALSR	MISSED APPROACH: Climb to 1300 then climbing left turn to 3000 direct GEP VORTAC and hold.
▼ For uncompensated Baro-VNAV systems, LNAV/VNAV NA below -19°C or above 54°C. For inop ALS, increase LPV Cat E visibility to RVR 4000, LNAV/VNAV Cat E visibility to 1 3⁄8 SM, LNAV Cat C/D/E visibility to 1 3⁄8 SM. #RVR 1800 authorized with use of FD or AP or HUD to DA.		

D-ATIS ARR <b>135.35 239.275</b> DEP <b>120.8</b>	MINNEAPOLIS APP CON <b>118.725 335.65</b> (Rwy 35) <b>119.3 335.65</b> (12L-30R, 4-22, 17) <b>126.95 335.65</b> (12R-30L)	MINNEAPOLIS TOWER <b>123.675 273.55</b> (17-35) <b>123.95 273.55</b> (12L-30R) <b>126.7 273.55</b> (12R-30L, 4-22)	GND CON <b>N 121.8 348.6</b> <b>S 121.9 348.6</b> <b>W 127.925 348.6</b>	CLNC DEL <b>133.2</b>
---	--	---	---	--------------------------



(IAF) LYDIA

Procedure NA for arrivals at LYDIA on V505 southbound and on V26 westbound.

KETAM		VGSi and RNAV glidepath not coincident. (VGSi Angle 3.00/TCH 76)		1300	3000	GEP
4000		IGEPY		2300	*1.2 NM to RW04	*LNAV only
GP 3.00° TCH 55		2300		RW04		
6.3 NM		3.2 NM		1.2 NM		
CATEGORY	A	B	C	D	E	
LPV DA#	1032/24 200 (200-½)					
LNAV/VNAV DA	1281/45 449 (500-¾)					
LNAV MDA	1300/24 468 (500-½)		1300/50 468 (500-1)			
CIRCLING	1360-1 518 (600-1)		1460-1¾ 618 (700-1¾)	1660-2¾ 818 (900-2¾)	1800-3 958 (1000-3)	

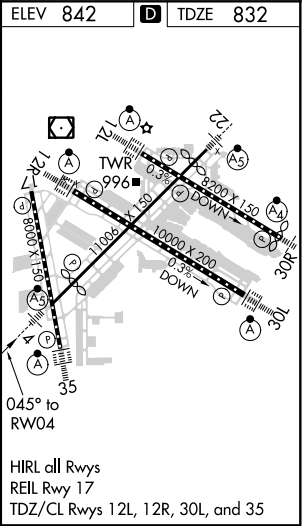
ELEV 842

**D**

TDZE 832

045° to RW04

HIRL all Rwy's  
REIL Rwy 17  
TDZ/CL Rwy's 12L, 12R, 30L, and 35



NC-1, 31 DEC 2020 to 28 JAN 2021

NC-1, 31 DEC 2020 to 28 JAN 2021