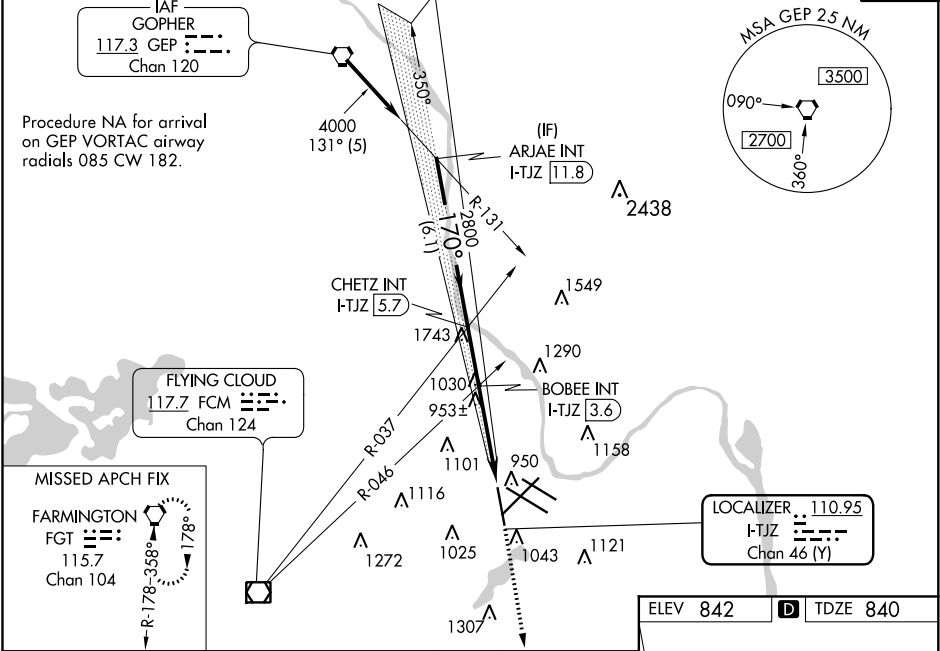


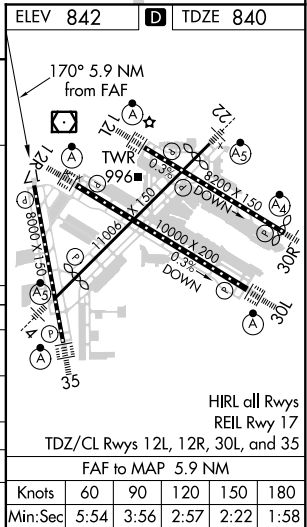
| | | | |
|---------------|---------|----------|------|
| LOC/DME I-TJZ | APP CRS | Rwy Idg | 8000 |
| 110.95 | 170° | TDZE | 840 |
| Chan 46 (Y) | | Apt Elev | 842 |

LOC RWY 17
MINNEAPOLIS-ST PAUL INTL/WOLD-CHAMBERLAIN (MSP)

| | | | | |
|---|----------------------------------|--|-----------------|----------|
| Helicopter visibility reduction below RVR 4000 NA. | | MISSED APPROACH: Climb to 1300 then climbing right turn to 3000 direct FGT VORTAC and hold. | | |
| D-ATIS | MINNEAPOLIS APP CON | MINNEAPOLIS TOWER | GND CON | CLNC DEL |
| ARR 135.35 239.275 | 118.725 335.65 (Rwy 35) | 123.675 273.55 (17-35) | N 121.8 348.6 | 133.2 |
| DEP 120.8 | 119.3 335.65 (12L-30R, 4-22, 17) | 123.95 273.55 (12L-30R) | S 121.9 348.6 | |
| | 126.95 335.65 (12R-30L) | 126.7 273.55 (12R-30L, 4-22) | W 127.925 348.6 | |
| CPDLC | | | | |



| | | | | |
|---|---------------------------|---------------------------|-------------------------|---|
| ARJAE INT I-TJZ [11.8] | | CHETZ INT I-TJZ [5.7] | BOBEE INT I-TJZ [3.6] | I-TJZ DME ANTENNA I-TJZ [0.9] I-TJZ [0.2] |
| 4000 | | 2800 | 2100 | |
| 6.1 NM | | 2.1 NM | 2.7 NM | 1 NM |
| CATEGORY | A | B | C | D |
| S-17 | 2100/60 1260 (1300-1¼) | 2100-1½ 1260 (1300-1½) | 2100-3 | 1260 (1300-3) |
| CIRCLING | 2100-1¼ 1258 (1300-1¼) | 2100-1½ 1258 (1300-1½) | 2100-3 | 1258 (1300-3) |
| BOBEE FIX MINIMUMS (DUAL VOR RECEIVERS OR DME REQUIRED) | | | | |
| S-17 | 1220/55 380 (400-1) | | | |
| CIRCLING | 1360-1 518 (600-1) | 1460-1¾ 618 (700-1¾) | 1660-2¾ 818 (900-2¾) | |



NC-1, 31 DEC 2020 to 28 JAN 2021

NC-1, 31 DEC 2020 to 28 JAN 2021