

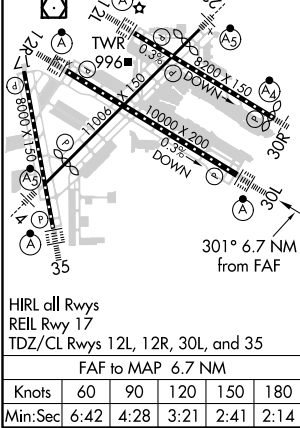
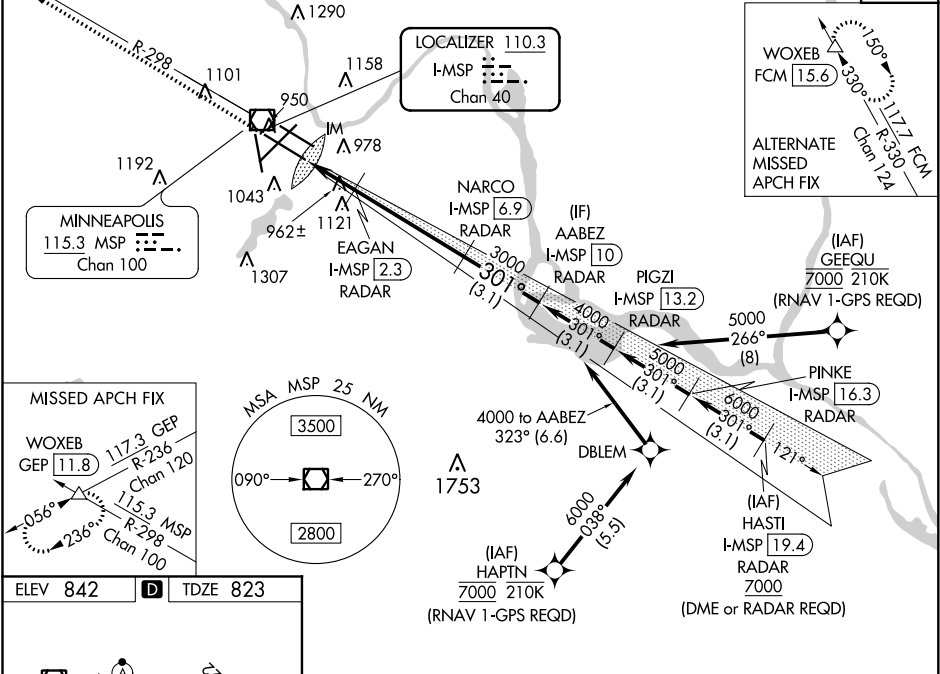
LOC/DME I-MSP 110.3 Chan 40	APP CRS 301°	Rwy Idg TDZE 823 Apt Elev 842	10000
---	------------------------	---	--------------

ILS or LOC RWY 30L

MINNEAPOLIS-ST PAUL INTL/WOLD-CHAMBERLAIN (MSP)

⚠ DME or RADAR required. Simultaneous approaches authorized with Rwy 30R and ILS V RWY 35 (CONVERGING). For inop ALS, increase S-ILS 30L Cat E visibility to RVR 4000, and increase S-LOC 30L Cat E visibility to RVR 6000.	ALS F-2 A	MISSED APPROACH: Climb to 1300 then climb to 3000 on heading 301° and MSP VOR/DME R-298 to WOXEB INT/ GEP VORTAC 11.8 DME and hold.
--	---------------------	---

D-ATIS ARR 135.35 239.275 DEP 120.8	MINNEAPOLIS APP CON 118.725 335.65 (Rwy 35) 119.3 335.65 (12L-30R, 4-22, 17) 126.95 335.65 (12R-30L)	MINNEAPOLIS TOWER 123.675 273.55 (17-35) 123.95 273.55 (12L-30R) 126.7 273.55 (12R-30L, 4-22)	GND CON N 121.8 348.6 S 121.9 348.6 W 127.925 348.6	CLNC DEL 133.2
---	--	---	---	--------------------------



1300 ↑	3000 ↑ hdg 301°	MSP R-298	WOXEB △	VGSI and ILS glidepath not coincident (VGSI Angle 3.00/TCH 78).		AABEZ I-MSP 10 RADAR
*LOC only		EAGAN I-MSP 2.3 RADAR	I-MSP 6.9 RADAR	3000		4000

NC-1, 31 DEC 2020 to 28 JAN 2021

NC-1, 31 DEC 2020 to 28 JAN 2021