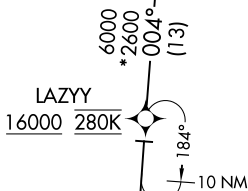


MINNEAPOLIS-ST PAUL INTL/WOLD-CHAMBERLAIN (MSP)

BLUEM THREE ARRIVAL (RNAV) Transition Routes

MINNEAPOLIS APP CON
135.475 335.5
D-ATIS ARR
135.35 239.275



NOTE: Expect "descend via" clearance and runway transition assignment by Center.
Approach will assign landing Rwy.

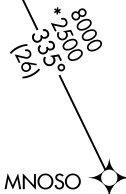
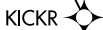
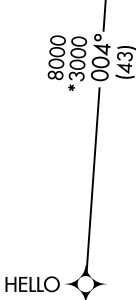
NOTE: Turbojet aircraft descend via Mach number until intercepting 280K. Maintain 280K until slowed by the STAR, or assigned by ATC.

NOTE: DME/DME/IRU or GPS required.

NOTE: For Turbojet aircraft only.

NOTE: RADAR required.

NOTE: RNAV 1.



NOTE: Chart note to scale.

(CONTINUED ON FOLLOWING PAGE)

- HELLO TRANSITION (HELLO.BLUEM3)
KICKR TRANSITION (KICKR.BLUEM3)
LAZYY TRANSITION (LAZYY.BLUEM3)
MNOSO TRANSITION (MNOSO.BLUEM3)
OOPEE TRANSITION (OOPEE.BLUEM3)

BLUEM THREE ARRIVAL (RNAV) Transition Routes

(BLUEM.BLUEM3) 05JAN17 MINNEAPOLIS-ST PAUL INTL/WOLD-CHAMBERLAIN (MSP)

NC-1, 31 DEC 2020 to 28 JAN 2021

NC-1, 31 DEC 2020 to 28 JAN 2021