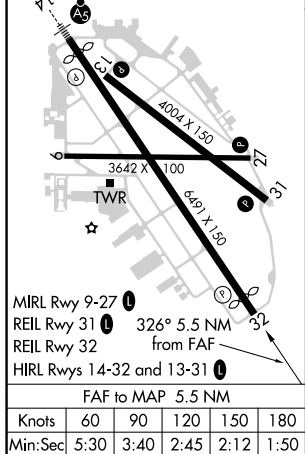


ILS or LOC RWY 32  
ST PAUL DOWNTOWN HOLMAN FIELD (STP)

**MISSED APPROACH:** Climb to 1300 then climbing right turn to 4000 on heading 010° and MSP R-037 to WHISK INT/MSP 18.7 DME/RADAR and hold.

ATIS <b>118.35</b>	MINNEAPOLIS APP CON <b>121.2 335.65</b>	ST. PAUL TOWER ★ <b>119.1 (CTAF) 0 257.8</b>	GND CON <b>121.675</b>	CLNC DEL <b>121.675</b>	UNICOM <b>122.95</b>
-----------------------	--	---	---------------------------	----------------------------	-------------------------



The diagram illustrates the S-LOC approach procedure for Runway 30. It shows a profile view with the following elements:

- Altitudes:** 1300 ft (Initial Climb), 4000 ft (MSP R-037), WHISK (Whisker Altitude), 2500 ft (HOVIN INT I-BAO, KIKKY INT I-BAO, and GS TCH 40).
- Distances:** 1.5 NM from the start of the LOC to the I-BAO fix; 0.8 NM from the I-BAO fix to the HOVIN INT; 3.2 NM from the HOVIN INT to the 2500 ft altitude point; 4.7 NM from the 2500 ft altitude point to the KIKKY INT.
- Angles:** 326° heading at the 2500 ft altitude point.
- Fixes and Intercepts:** I-BAO [1.1], \*I-BAO [2.6], HOVIN INT I-BAO [3.4], and KIKKY INT I-BAO [11.3].
- Procedure Notes:** \*LOC only, GS 3.00°, TCH 40.

CATEGORY	A	B	C	D
S-ILS 32	1011/50 307 (400-1)			
S-LOC 32	1460/55 756 (800-1)	1460/60 756 (800-1¼)	1460-2	756 (800-2)
<b>CIRCLING</b>	1580-1¼	875 (900-1¼)	1580-2½ 875 (900-2½)	1580-2¾ 875 (900-2¾)
<b>HOVIN FIX MINIMUMS</b>				
S-LOC 32	1220/55	516 (600-1)	1220-1¼	516 (600-1¼)
<b>CIRCLING</b>	1580-1¼	875 (900-1¼)	1580-2½ 875 (900-2½)	1580-2¾ 875 (900-2¾)

NC-1, 31 DEC 2020 to 28 JAN 2021