

WAAS CH 77514 W30A	APP CRS 301°	Rwy Idg 7201 TDZE 1286 Apt Elev 1289
--	------------------------	---

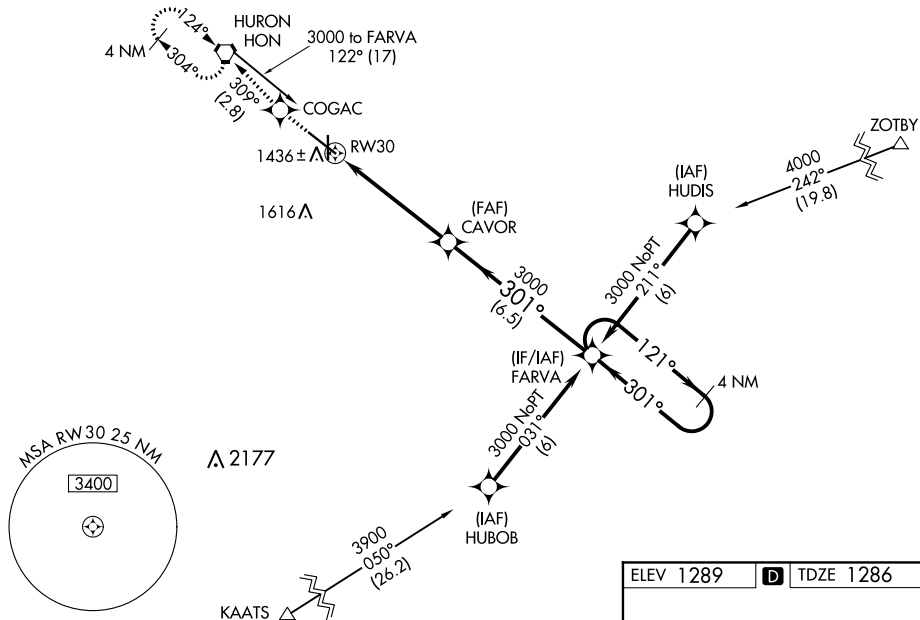
RNAV (GPS) RWY 30
HURON RGNL (HON)

RNP APCH.

- T** When local altimeter setting not received, use Mitchell Muni altimeter setting and increase all DA 89 feet and all MDA 100 feet, increase LPV and LNAV/VNAV all Cats, LNAV Cats C/D, and Circling Cats C/D visibility $\frac{1}{4}$ mile. For uncompensated Baro-VNAV systems, LNAV/VNAV NA below -17°C (2°F) or above 46°C (114°F). Baro-VNAV NA when using Mitchell Muni altimeter setting. Circling Rwy 17, 35 NA at night.

MISSED APPROACH: Climb to 3000 direct COGAC and on track 309° to HON VORTAC and hold.

ASOS 118.125	MINNEAPOLIS CENTER 126.25 339.8	UNICOM 123.0 (CTAF) ①
------------------------	---	---------------------------------



3000

↑

COGAC

tr 309°

HON

CAVOR

FARVA

4 NM Holding Pattern

301°

121°

3000

301°

3000

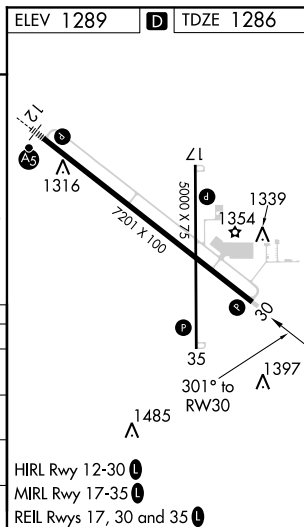
RW30

5.2 NM

6.5 NM

GP 3.00° TCH 50

CATEGORY	A	B	C	D
LPV DA	1559-1 273 (300-1)			
RNAV/ VNAV DA	1721-1½ 435 (500-1½)			
RNAV MDA	1760-1	474 (500-1)	1760-1¼ 474 (500-1¼)	1760-1½ 474 (500-1½)
CIRCLING	1820-1	531 (600-1)	1820-1½ 531 (600-1½)	1980-2¼ 691 (700-2¼)



HURON RGNL (HON)
RNAV (GPS) RWY 30