
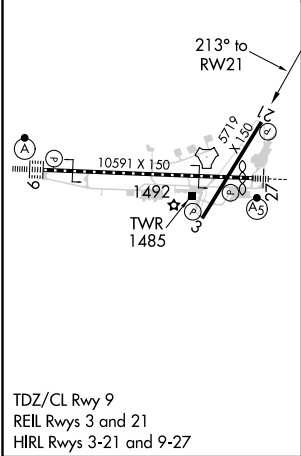
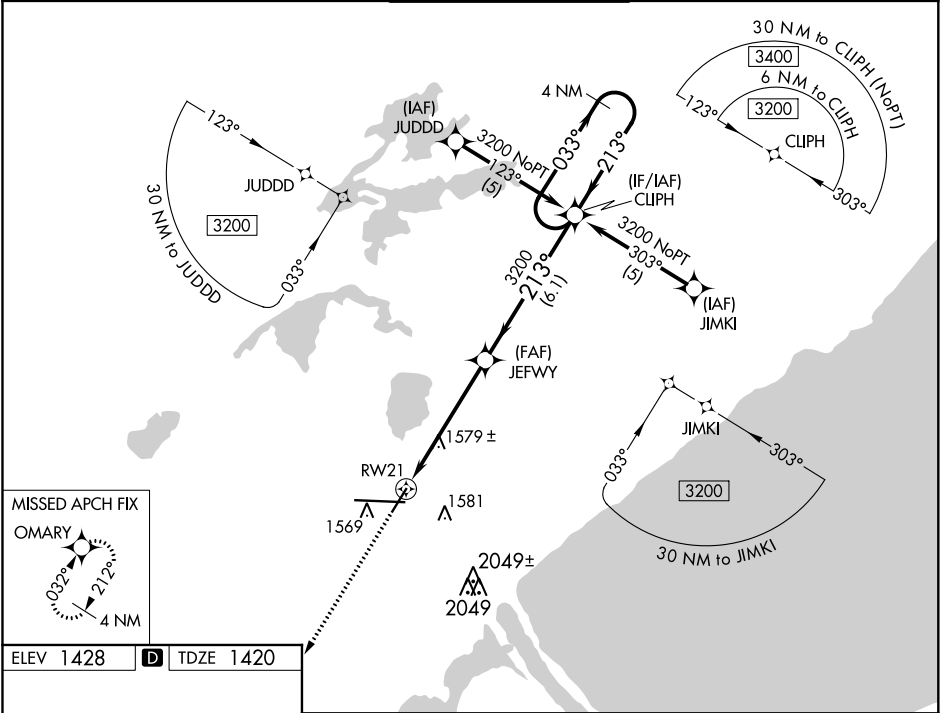




WAAS CH <b>40114</b> <b>W21A</b>	APP CRS <b>213°</b>	Rwy Idg TDZE <b>1420</b> Apt Elev <b>1428</b>
--	------------------------	---

RNAV (GPS) RWY 21  
DULUTH INTL (DLH)

 ASR	For uncompensated Baro-VNAV systems, LNAV/VNAV NA below -17°C (2°F) or above 46°C (115°F). DME/DME RNP-0.3 NA. Rwy 21 helicopter visibility reduction below ¾ SM NA.	MISSED APPROACH: Climb to 3200 direct OMARY and hold.
--	--	---

ATIS <b>124.1 270.1</b>	DULUTH APP CON <b>125.45 233.7</b>	DULUTH TOWER <b>118.3 257.8</b>	GND CON <b>121.9 348.6</b>
----------------------------	---------------------------------------	------------------------------------	-------------------------------



	3200	OMARY	JEFWY	CLIPH	4 NM Holding Pattern
			3200		
	*LNAV only				
	*1.2 NM to RW27				
			213°	033°	3200
			3200	213°	
	1.2 NM	4.2 NM	6.1 NM		GP 3.00° TCH 40
CATEGORY	A	B	C	D	
LPV DA	1708-1 288 (300-1)				
LNAV/VNAV DA	1927-1¾ 507 (500-1¾)				
LNAV MDA	1840-1	420 (500-1)	1840-1¼	420 (500-1¼)	
 CIRCLING	1880-1 452 (500-1)	1900-1 472 (500-1)	1940-1½ 512 (600-1½)	2400-3 972 (1000-3)	

NC-1, 31 DEC 2020 to 28 JAN 2021

NC-1, 31 DEC 2020 to 28 JAN 2021