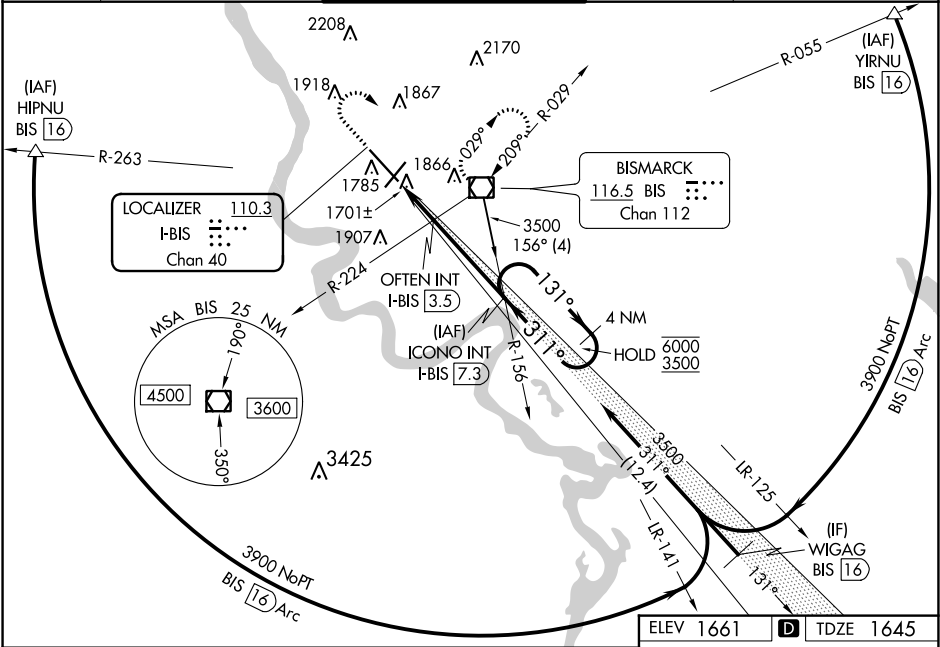


LOC/DME I-BIS 110.3 Chan 40	APP CRS 311°	Rwy Idg TDZE Apt Elev	8794 1645 1661
---	------------------------	-----------------------------	---

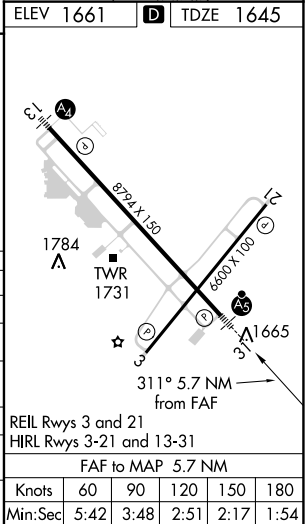
ILS or LOC RWY 31
BISMARCK MUNI (BIS)

DME required for procedure entry.	MALSR	MISSED APPROACH: Climb to 2800 then climbing right turn to 3600 direct BIS VOR/DME and hold.
Autopilot coupled approach NA below 2680. For inop ALS, increase S-LOC 31 OFTEN FIX Cat C/D minimums visibility to RVR 5500.	ASR -35°C	

ATIS 119.35	BISMARCK APP CON★ 126.3 298.9	BISMARCK TOWER★ 118.3 (CTAF) 0 257.8	GND CON 121.9	UNICOM 122.95
-----------------------	---	--	-------------------------	-------------------------



2800	3600	BIS	Use I-BIS DME when on the localizer course.	ICONO INT I-BIS 7.3	4 NM Holding Pattern
*LOC only.	*I-BIS 1.6	*I-BIS 2.6	OFTEN INT I-BIS 3.5	3500	131° → 6000 ← 311° 3500
1 NM	0.9 NM	3.8 NM			GS 3.00° TCH 48
CATEGORY	A	B	C	D	
S-ILS 31		1845/24	200 (200-½)		
S-LOC 31	2300/24	655 (700-½)	2300-1⅓	655 (700-1⅓)	
CIRCLING	2300-1	639 (700-1)	2460-2¼ 799 (800-2¼)	2460-2½ 799 (800-2½)	
OFTEN FIX MINIMUMS (DUAL VOR RECEIVERS OR DME REQUIRED)					
S-LOC 31	2020/24	375 (400-½)	2020/35	375 (400-⅝)	
CIRCLING	2240-1	579 (600-1)	2460-2¼ 799 (800-2¼)	2460-2½ 799 (800-2½)	



NC-1, 31 DEC 2020 to 28 JAN 2021

NC-1, 31 DEC 2020 to 28 JAN 2021