

WAAS CH 86217 W01A	APP CRS 010°	Rwy Idg 6500 TDZE 1101 Apt Elev 1109
--	------------------------	---

RNAV (GPS) RWY 1

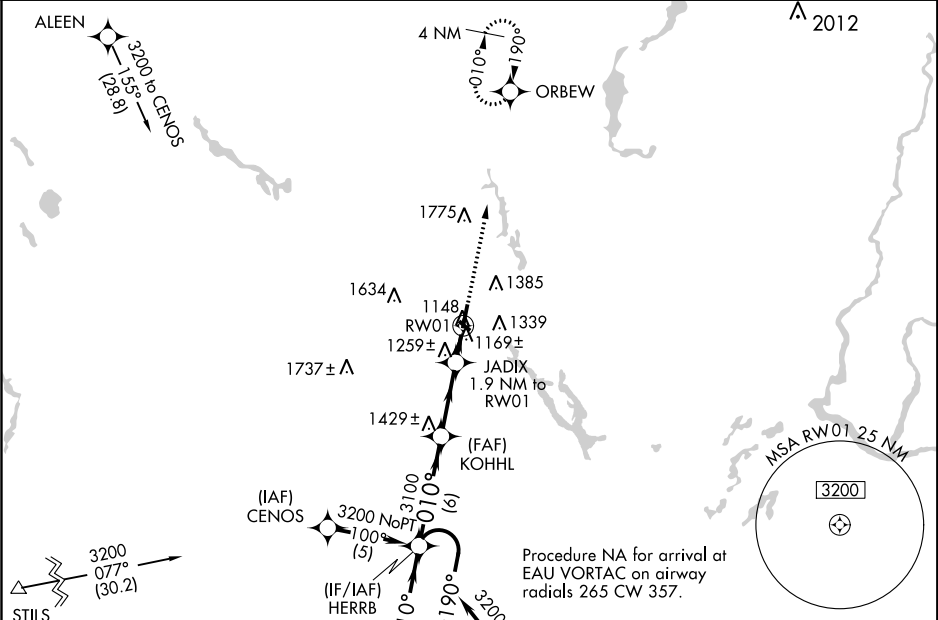
RICE LAKE RGNL-CARL'S FIELD (RPD)

If local altimeter setting not received, use Chippewa Valley Rgnl altimeter setting and increase all DAs/MDAs 120 feet. DME/DME RNP-0.3 NA. Baro-VNAV NA below -17°C (3°F). Baro VNAV and VDP NA when using Chippewa Valley Rgnl altimeter setting. For inoperative MALSR, increase LPV visibility to 1, and LNAV Cat D visibility to 1½. Circling Rwy 13, 31 NA at night.

MALSR

MISSED APPROACH:
Climb to 3200 direct ORBEW and hold.

AWOS-3 120.525	MINNEAPOLIS CENTER 125.3 335.6	UNICOM 122.7 (CTAF) 0
--------------------------	--	--



ELEV 1109

TDZE 1101

REIL Rwy 13, 31
REIL Rwy 19
HIRL Rwy 1-19
MIRL Rwy 13-31

4 NM Holding Pattern	HERRB	KOHL	JADIX 1.9 NM to RW01	3200 ORBEW
GP 3.00° TCH 45	3200	3100	1760	
	6 NM	4.2 NM	0.6	1.3
CATEGORY	A	B	C	D
LPV DA		1390-½	289 (300-½)	
LNAV/ VNAV		1440-¾	339 (400-¾)	
LNAV MDA	1520-½	419 (500-½)	1520-¾ 419 (500-¾)	1520-1 419 (500-1)
CIRCLING	1600-1¼ 493 (500-1¼)	1740-1¼ 631 (700-1¼)	1740-1¾ 631 (700-1¾)	1940-2¾ 831 (900-2¾)

VGSI and RNAV glidepath not coincident (VGSI Angle 3.00/TCH 28).

* LNAV only

* 1.3 NM to RW01

010° to RW01