

LADYSMITH, WISCONSIN

AL-6704 (FAA)

20198

WAAS CH 77921 W14A	APP CRS 140°	Rwy Idg 4001 TDZE 1237 Apt Elev 1240
--	------------------------	---

APP CRS
140°

Rwy Idg	4001
TDZE	1237
Apt Elev	1240

RNAV (GPS) RWY 14
RUSK COUNTY (RCX)

RNP APCH.

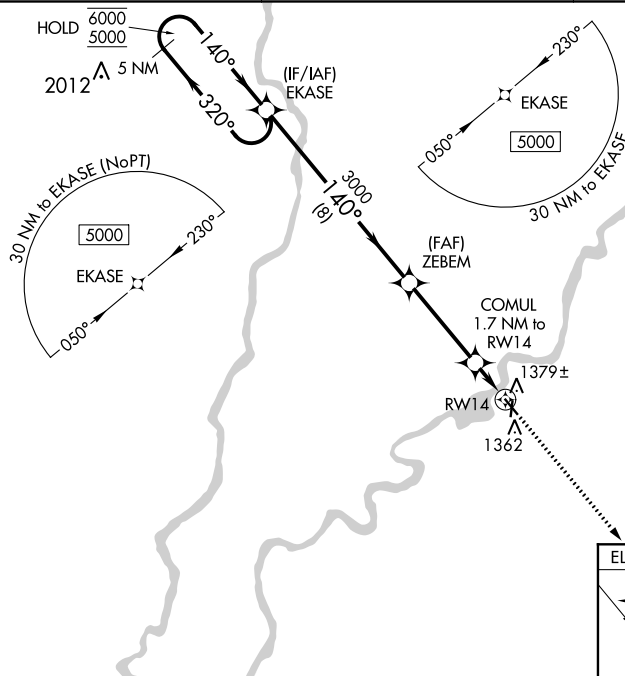


Rwy 14 helicopter visibility reduction below 1 SM NA. Straight-in Rwy 14 NA at night, Circling Rwy 1, 14, 19 NA at night. When local altimeter setting not received, use Rice Lake altimeter setting and increase all MDAs 100 feet.

MISSED APPROACH: Climb to 5000 direct FIMOG and hold, continue climb-in-hold to 5000.

AWOS-3
118.125

MINNEAPOLIS CENTER
133.65 281.5

UNICOM
122.8 (CTAF) **L**

MISSED APCH FIX

ELEV	1240		TDZE	1237
------	------	--	------	------

5 NM Holding Pattern

EKASE

ZEBEM

COMUL 1.7 NM to RW14

5000 FIMOG

6000 ← 320°

5000 → 140°

140°

3.00° TCH 45

3000

1820

8 NM

3.7 NM

1.7 NM

RW14

VGSI and descent angles not coincident (VGSI Angle 3.00/TCH 29).

CATEGORY	A	B	C	D
LNAV MDA	1640-1	403 (400-1)	NA	
CIRCLING	1680-1 440 (500-1)	1700-1 460 (500-1)	NA	

REIL Rwys 14 and 32 **L**
MIRL Rwys 14-32 and 1-19 **L**

LADYSMITH, WISCONSIN
Orig-B 31JAN19

45°30'N-91°00'W

RUSK COUNTY (RCX)
RNAV (GPS) RWY 14

EC-3, 31 DEC 2020 to 28 JAN 2021