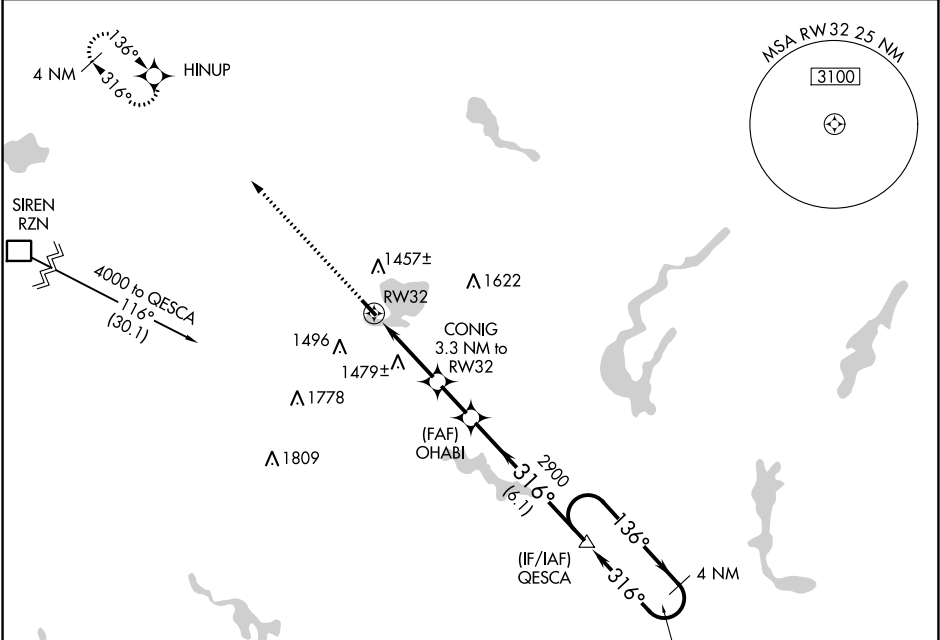


APP CRS	Rwy Idg	3500
316°	TDZE	1233
	Apt Elev	1233

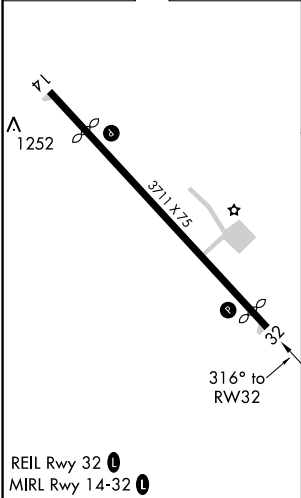
RNAV (GPS) RWY 32  
SHELL LAKE MUNI (SSQ)

RNP APCH.	Procedure NA at night. Rwy 32 helicopter visibility reduction below 1 SM NA. NA Use Cumberland altimeter setting.	MISSED APPROACH: Climb to 4000 direct HINUP and hold.
-----------	--	---

UBE AWOS-3PT 119.175	MINNEAPOLIS CENTER 126.45 276.4	UNICOM 122.8 (CTAF) 0
-------------------------	------------------------------------	--------------------------



ELEV 1233	D	TDZE 1233
-----------	---	-----------



4000 HINUP	VGSI and descent angles not coincident (VGSI Angle 3.00/TCH 23).		
CONIG 3.3 NM to RW32	OHABI	QESCA	4 NM Holding Pattern
RW32	3.02° TCH 40	316°	136° 6000 4000
3.3 NM	1.8 NM	6.1 NM	
CATEGORY	A	B	C
LNAV MDA	1800-1 567 (600-1)	1800-1 567 (600-1)	1800-1 567 (600-1)
CIRCLING	1840-1 607 (700-1)	1840-1 607 (700-1)	1860-2 627 (700-2)

EC-3, 31 DEC 2020 to 28 JAN 2021

EC-3, 31 DEC 2020 to 28 JAN 2021