

WAAS CH 90131 W10A	APP CRS 097°	Rwy Idg TDZE 1236 Apt Elev 1238
--	------------------------	---

RNAV (GPS) RWY 10

NEILLSVILLE MUNI (VIQ)

▼

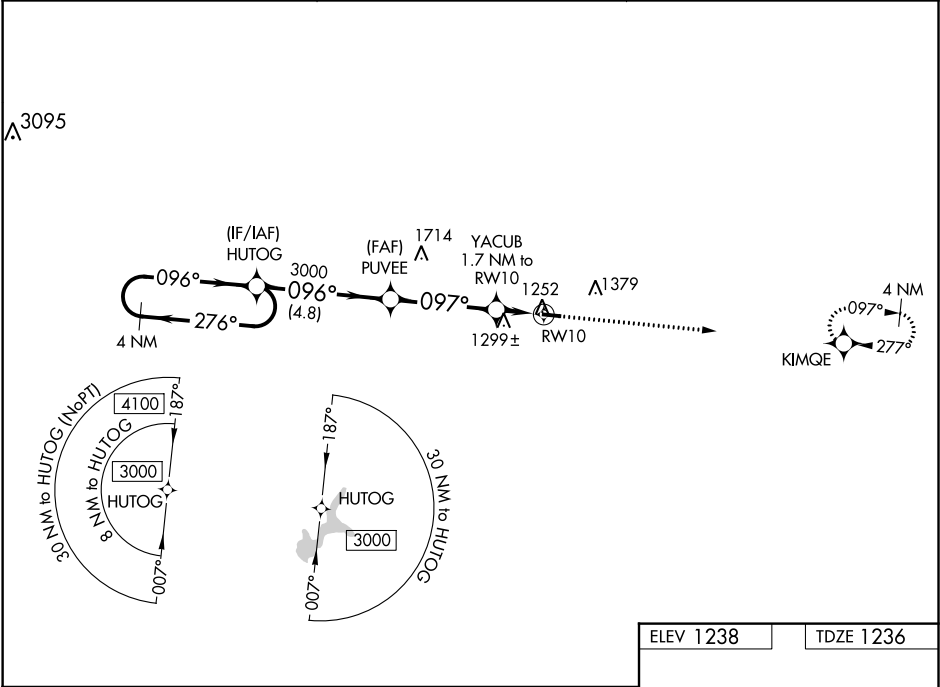
Baro-VNAV NA. DME/DME RNP-0.3 NA. Helicopter visibility reduction below ¾ SM NA. Use Marshfield altimeter setting; when not received, use Wisconsin Rapids altimeter setting and increase all DA 63 feet and all MDA 80 feet. Increase LPV and LNAV/VNAV Cals A/B visibility ¼ mile.

⚠

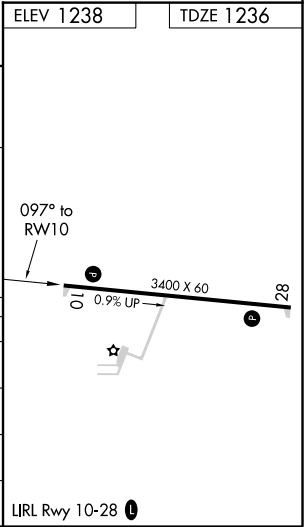
NA

MISSED APPROACH: Climb to 3000 direct KIMQE and hold.

MFI ASOS 121.575	MINNEAPOLIS CENTER 124.4 317.7	UNICOM 122.8 (CTAF) 0
----------------------------	--	---------------------------------



4 NM Holding Pattern		VGSI and RNAV glidepath not coincident (VGSI Angle 3.00/TCH 32).		3000	KIMQE
HUTOG		PUVEE		YACUB	* LNAV only
3000 ← 276°		096° →		1.7 NM to RWY 10	
GP 3.00°		3000		RWY 10	
TCH 40		*1780			
4.8 NM		3.8 NM		1.7 NM	
CATEGORY	A	B	C	D	
LPV DA	1526-1	290 (300-1)	NA		
LNAV/VNAV DA	1526-1	290 (300-1)	NA		
LNAV MDA	1600-1	364 (400-1)	NA		
CIRCLING	1720-1	482 (500-1)	NA		



EC-3, 31 DEC 2020 to 28 JAN 2021

EC-3, 31 DEC 2020 to 28 JAN 2021