

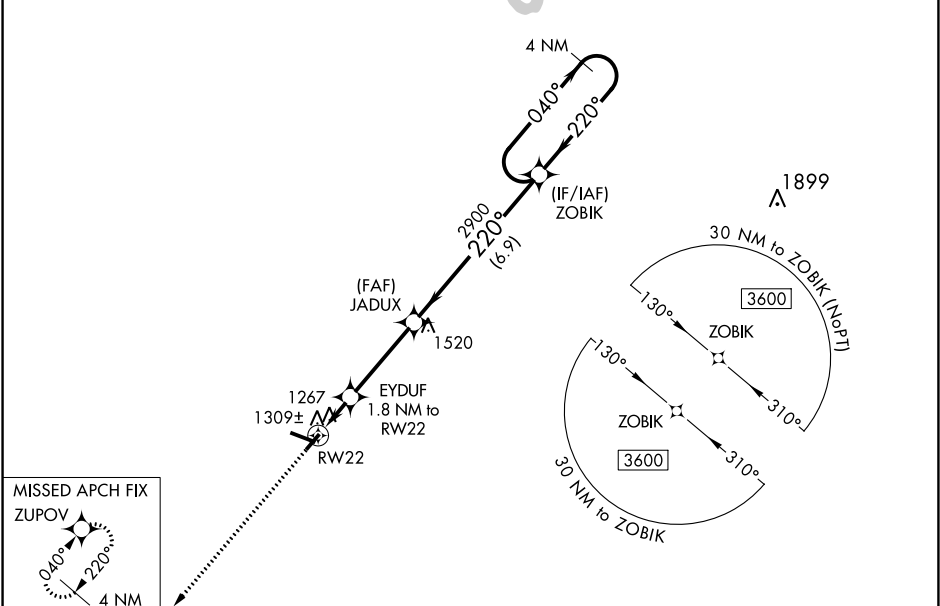
WAAS CH <b>57930</b> <b>W22A</b>	APP CRS <b>220°</b>	Rwy Idg TDZE <b>1171</b> Apt Elev <b>1171</b>	<b>3600</b>
--	------------------------	---	-------------

RNAV (GPS) RWY 22  
IOWA COUNTY (MRJ)

Baro-VNAV NA when using Platteville altimeter setting. For uncompensated Baro-VNAV systems, LNAV/VNAV NA below -17°C (2°F) or above 54°C (130°F). When local altimeter setting not received, use Platteville altimeter setting and increase all DA 55 feet, increase LPV all Cats visibility ½ mile and LNAV/VNAV all Cats visibility ¼ mile, increase all MDA 60 feet, and LNAV Cat C visibility ¼ mile. DME/DME RNP-0.3 NA. Helicopter visibility reduction below ¾ SM NA.

MISSED APPROACH:  
Climb to 3500 direct ZUPOV and hold.

AWOS-3 <b>118.525</b>	CHICAGO CENTER <b>133.95 281.4</b>	UNICOM <b>122.8 (CTAF) 0</b>
--------------------------	---------------------------------------	---------------------------------



ELEV <b>1171</b>	TDZE <b>1171</b>
------------------	------------------

	3500	ZUPOV	VGSI and RNAV glidepath not coincident (VGSI Angle 3.00/TCH 30).		4 NM Holding Pattern
	*LNAV only	EYDUF 1.8 NM to RW22	JADUX 2900	ZOBK	040° → 3600 ← 220°
		*1.2 NM to RW22	*1780	2900	GP 3.00° TCH 40
		1.2	0.6	3.5 NM	6.9 NM
	CATEGORY	A	B	C	D
LPV DA	1371-¾ 200 (200-¾)				NA
LNAV/VNAV DA	1479-1 308 (400-1)				NA
LNAV MDA	1580-1	409 (500-1)	1580-1½ 409 (500-1½)	NA	
CIRCLING	1620-1 449 (500-1)	1640-1 469 (500-1)	1640-1½ 469 (500-1½)	NA	

REIL Rwys 11 and 29  
MRL Rwy 4-22 and 11-29