

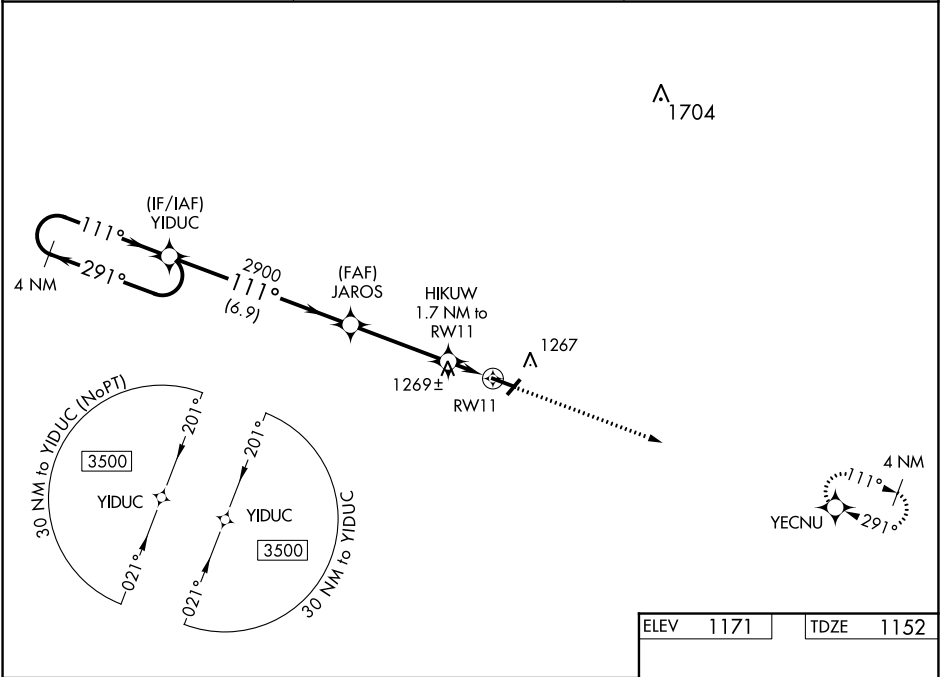
WAAS CH <b>72630</b> <b>W11A</b>	APP CRS <b>111°</b>	Rwy Idg TDZE <b>1152</b> Apt Elev <b>1171</b>	<b>5001</b> <b>1152</b> <b>1171</b>
--	------------------------	---	---

RNAV (GPS) RWY 11  
IOWA COUNTY (MRJ)

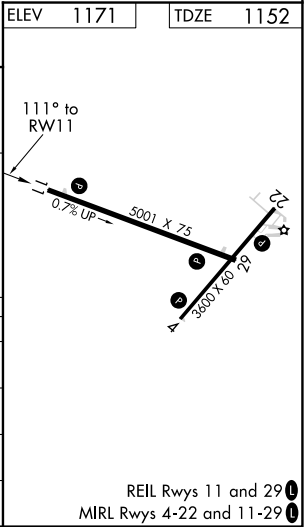
**⚠** Baro-VNAV NA when using Platteville altimeter setting. For uncompensated Baro-VNAV systems, LNAV/VNAV NA below -17°C (2°F) or above 54°C (130°F). When local altimeter setting not received, use Platteville altimeter setting and increase all DA 55 feet, increase LPV and LNAV/VNAV all Cats visibility 1/8 mile, increase all MDA 60 feet, and LNAV Cat C visibility 1/4 mile. DME/DME RNP-0.3 NA.

MISSED APPROACH:  
Climb to 3600 direct  
YECNU and hold.

AWOS-3 <b>118.525</b>	CHICAGO CENTER <b>133.95 281.4</b>	UNICOM <b>122.8 (CTAF) 0</b>
--------------------------	---------------------------------------	---------------------------------



4 NM Holding Pattern		VGSI and RNAV glidepath not coincident (VGSI Angle 3.00/TCH 61).		3600	YECNU
3500 ← 291° 111° →		JAROS 2900		HIKUW 1.7 NM to RW11	* LNAV only
GP 3.00° TCH 40		* 1700		* 1 NM to RW11	
		6.9 NM		3.7 NM	0.7 NM
CATEGORY	A	B	C	D	
LPV DA	1352-3/4		200 (200-3/4)	NA	
LNAV/VNAV DA	1402-7/8		250 (300-7/8)	NA	
LNAV MDA	1520-1	368 (400-1)	1520-1 1/8 368 (400-1 1/8)	NA	
CIRCLING	1620-1 449 (500-1)	1640-1 469 (500-1)	1640-1 1/2 469 (500-1 1/2)	NA	



EC-3, 31 DEC 2020 to 28 JAN 2021

EC-3, 31 DEC 2020 to 28 JAN 2021