

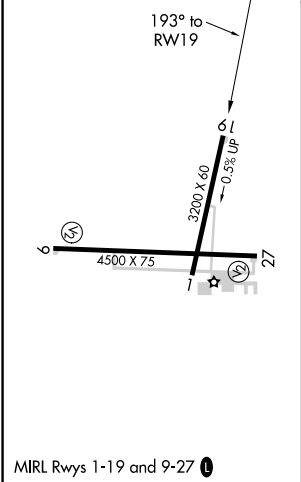
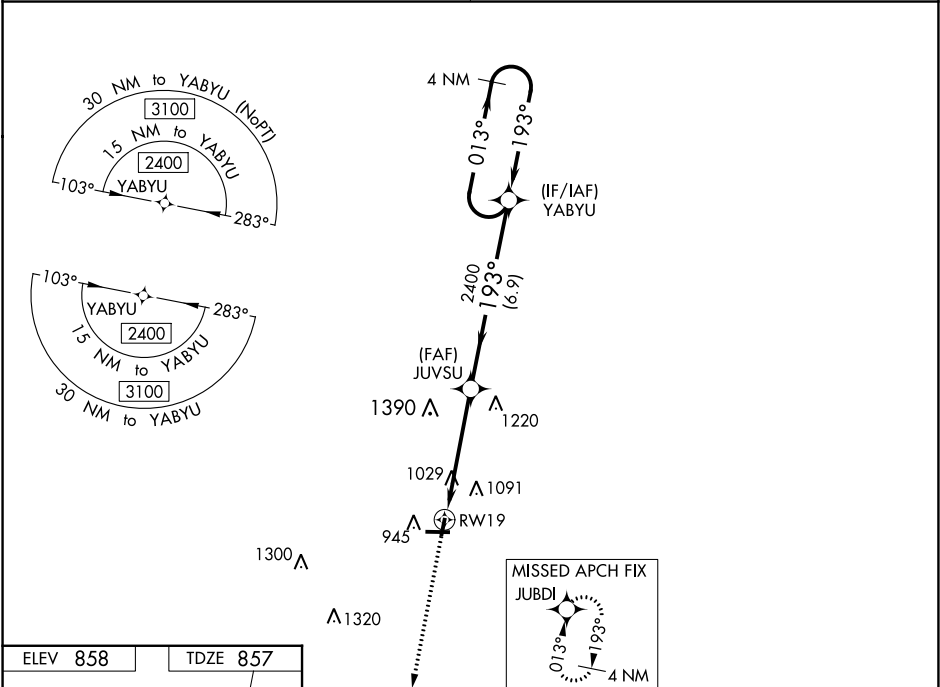
WAAS CH <b>97533</b> <b>W19A</b>	APP CRS <b>193°</b>	Rwy Idg TDZE <b>857</b> Apt Elev <b>858</b>
--	------------------------	---

RNAV (GPS) RWY 19

KEWANEE MUNI (EZI)

<div><div>▼</div><div>NA</div></div> <div>Baro-VNAV NA. DME/DME RNP-0.3 NA. Use Galesburg altimeter setting; when not received, use Moline altimeter setting and increase all DA 29 feet and all MDA 40 feet, increase LPV all Cats and LNAV Cat C visibility <math>\frac{1}{8}</math> mile, and Circling Cat C visibility <math>\frac{1}{4}</math> mile.</div>	MISSED APPROACH: Climb to 2400 direct JUBDI and hold.
---	---

QUAD CITY APP CON ★ <b>133.275 257.8</b>	UNICOM <b>122.8</b> (CTAF) <b>0</b>
---	--



2400

↑

JUBDI

✦

4 NM

Holding Pattern

JUVSU

2400

YABYU

RW19

↻

2400

↖

193°

↔

013°

↗

2400

193°

↔

2400

GP 3.00°

TCH 40

4.8 NM

6.9 NM

CATEGORY	A		B	C	D
LPV DA	1182-1 $\frac{1}{8}$ 325 (400-1 $\frac{1}{8}$ )				NA
LNAV/VNAV DA	1416-2 559 (600-2)				NA
LNAV MDA	1400-1	543 (600-1)	1400-1 $\frac{5}{8}$ 543 (600-1 $\frac{5}{8}$ )		NA
CIRCLING	1400-1 542 (600-1)	1520-1 662 (700-1)	1520-1 $\frac{3}{4}$ 662 (700-1 $\frac{3}{4}$ )		NA