

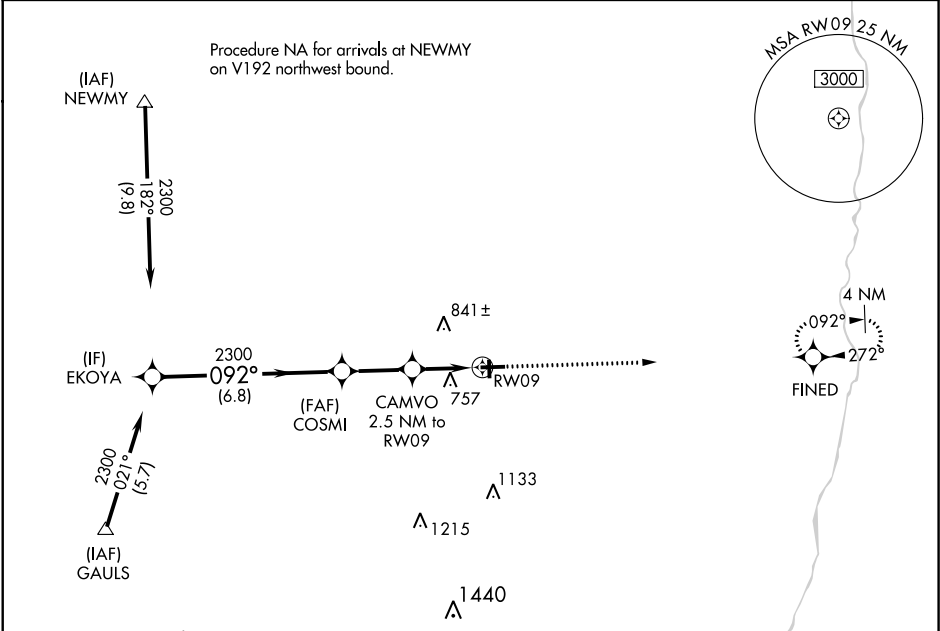
WAAS CH 50439 W09A	APP CRS 092°	Rwy Idg TDZE 654 Apt Elev 654
--	------------------------	---

RNAV (GPS) RWY 9

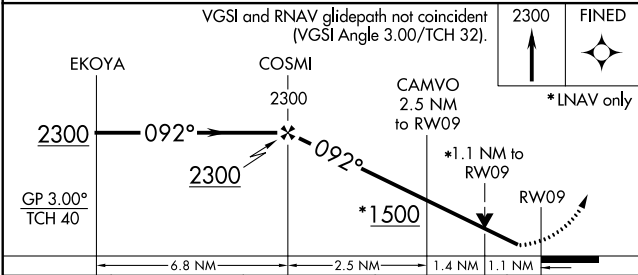
EDGAR COUNTY (PRG)

RNP APCH. <div>▼ For uncompensated Baro-VNAV systems, LNAV/VNAV NA below -16°C or above 54°C. Rwy 9 helicopter visibility reduction below ¾ SM NA. Circling Rwy 18 NA at night.</div>	MISSED APPROACH: Climb to 2300 direct FINED and hold.
--	---

AWOS-3 124.175	HULMAN APP CON 125.45 339.8	UNICOM 123.0 (CTAF) 0
--------------------------	---------------------------------------	---------------------------------



Procedure NA for arrivals at GAULS on V50 westbound.	ELEV 654	TDZE 654
--	----------	----------



CATEGORY	A	B	C	D
LPV DA	904-1	250 (300-1)		
LNAV/VNAV DA	904-1	250 (300-1)		
LNAV MDA	1020-1	366 (400-1)		
CIRCLING	1080-1 426 (500-1)	1120-1 466 (500-1)	1180-1½ 526 (600-1½)	1320-2 666 (700-2)

