

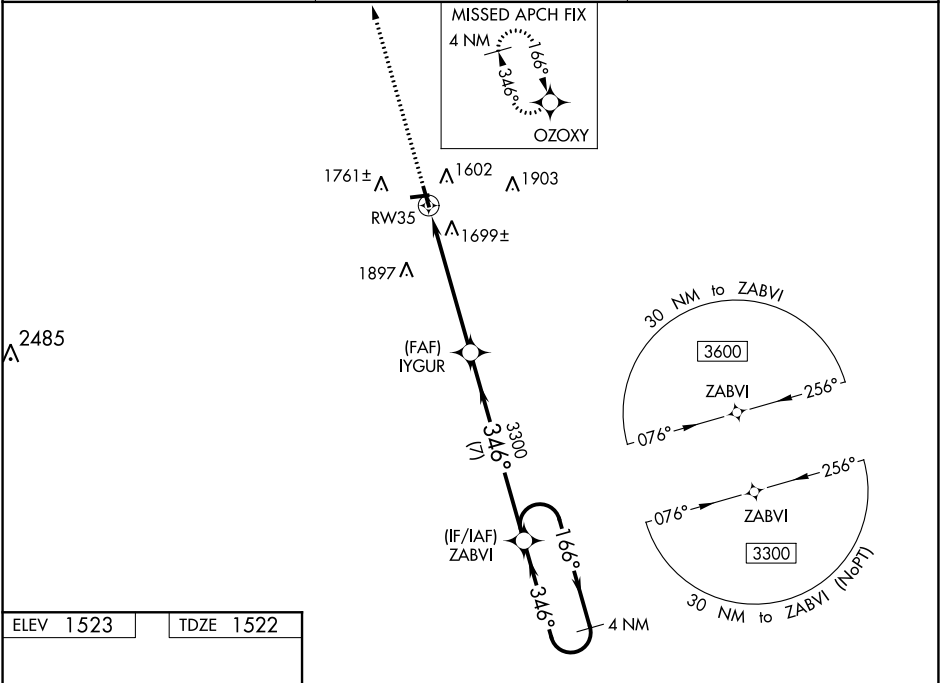
WAAS CH 45732 W35A	APP CRS 346°	Rwy Idg TDZE Apt Elev	4010 1522 1523
--	------------------------	-----------------------------	---

RNAV (GPS) RWY 35
LANGLADE COUNTY (AIG)

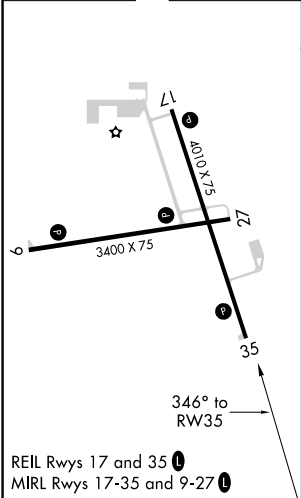
⚠ For uncompensated Baro-VNAV systems, LNAV/VNAV NA below -18°C (0°F) or above 54°C (130°F). DME/DME RNP-0.3 NA. Baro-VNAV and VDP NA when using Wausau Downtown altimeter setting. Helicopter visibility reduction below ¾ SM NA. When local altimeter setting not received, use Wausau Downtown altimeter setting: increase all DA 105 feet and visibility LPV all Cats ¼ mile and LNAV/VNAV all Cats ¾ mile; increase all MDA 120 feet and visibility LNAV Cat C/D and Circling Cat C ½ mile and Circling Cat D ¼ mile.

MISSED APPROACH:
Climb to 3400 direct OZOXV and hold.

AWOS-3 119.075	MINNEAPOLIS CENTER 124.4 317.7	UNICOM 122.8 (CTAF) 1
--------------------------	--	---------------------------------



ELEV 1523	TDZE 1522
------------------	------------------



3400 **OZOXV** **VGSI and RNAV glidepath not coincident (VGSI Angle 3.00/TCH 36).**

*** LNAV only.**

1.3 NM to RW35

3300 **IYUR** **3300** **ZABVI** **4 NM Holding Pattern**

346° **166°** **3300** **GP 3.00° TCH 40**

1.3 **4.2 NM** **7 NM**

CATEGORY	A	B	C	D
LPV DA	1772-1		250 (300-1)	
LNAV/ VNAV DA	2019-1¾		497 (500-1¾)	
LNAV MDA	1960-1	438 (500-1)	1960-1¼	438 (500-1¼)
CIRCLING	2120-1	597 (600-1)	2120-1½ 597 (600-1½)	2120-2 597 (600-2)

EC-3, 31 DEC 2020 to 28 JAN 2021

EC-3, 31 DEC 2020 to 28 JAN 2021