

WAAS CH 99331 W09A	APP CRS 089°	Rwy Idg TDZE 1469 Apt Elev 1478
--	------------------------	---

RNAV (GPS) RWY 9

TAYLOR COUNTY (MDZ)

RNP APCH.

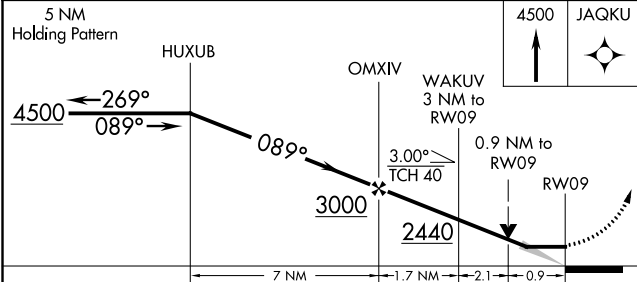
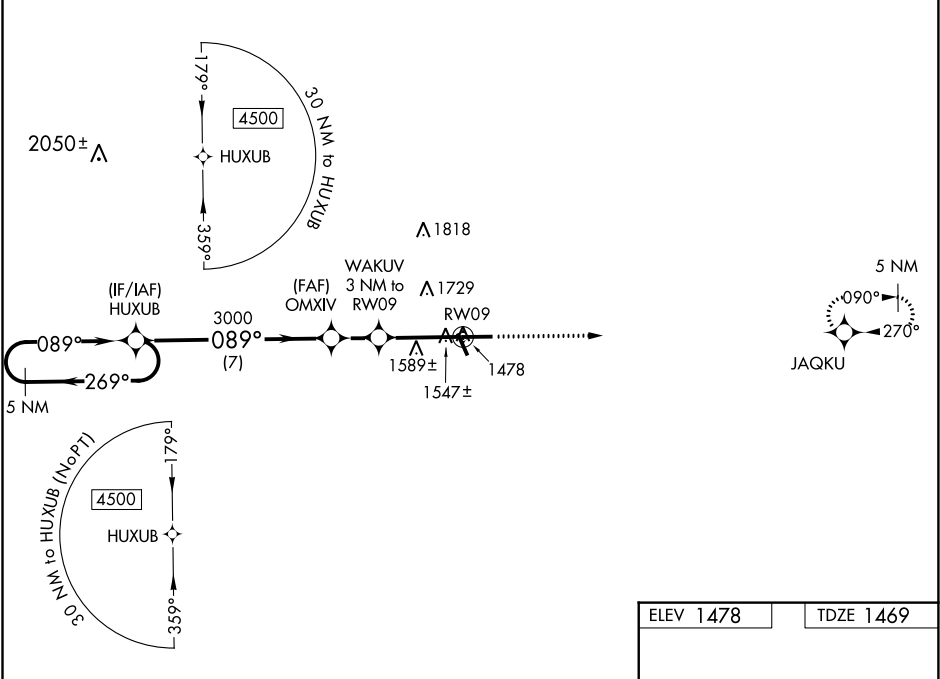
▼

▲

When local altimeter setting not received, use Merrill altimeter setting and increase all MDA 100 feet, and increase LP Cat C, D visibilities ¼ mile, and increase LNAV Cat C, D visibilities ⅓ mile. VDP NA when using Merrill altimeter setting.

MISSED APPROACH:
Climb to 4500 direct JAQKU and hold.

AWOS-3 119.025	MINNEAPOLIS CENTER 124.4 317.7	UNICOM 122.8 (CTAF) 0
--------------------------	--	---------------------------------



ELEV 1478	TDZE 1469
<p>089° to RW09 6000 X 100 0.3% UP 4435 X 75 RWY 9 RWY 34 JAQKU</p>	
REIL Rwy 9, 27 and 34 MRL Rwy 9-27 and 16-34	