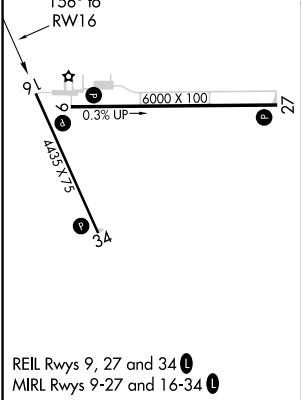
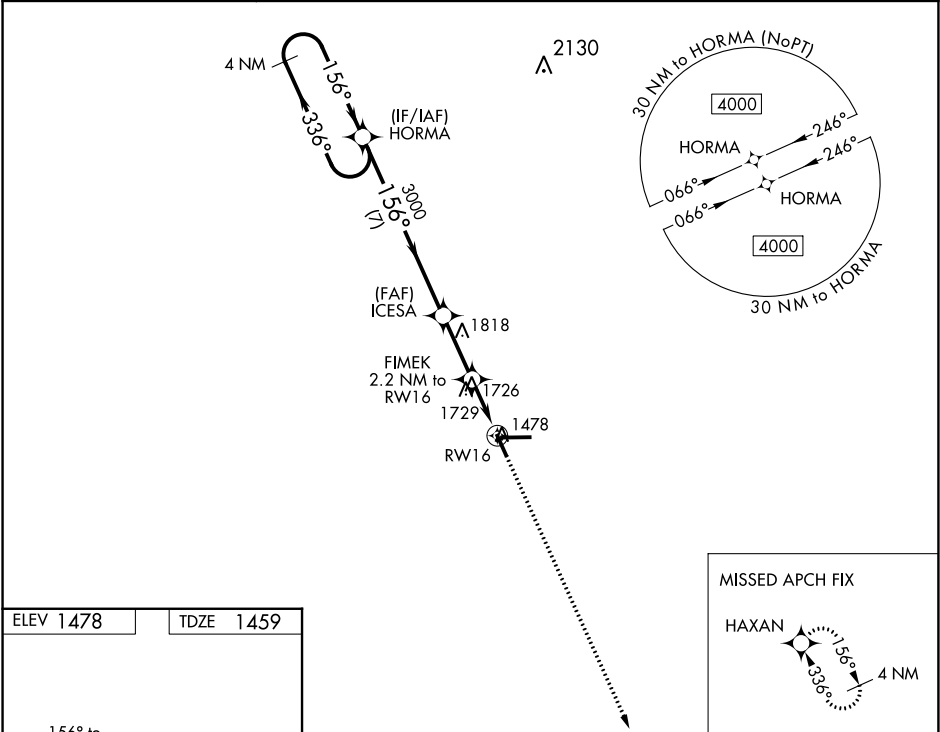




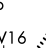
WAAS CH 86231 W16A	APP CRS 156°	Rwy Idg TDZE Apt Elev	4435 1459 1478
--	------------------------	-----------------------------	---

RNAV (GPS) RWY 16
TAYLOR COUNTY (MDZ)

RNP APCH.	When local altimeter setting not received, use Merrill altimeter setting and increase all MDA 100 feet and increase all Cat C/D visibility ¼ mile. Rwy 16 helicopter visibility reduction below ¾ SM NA. VDP NA when using Merrill altimeter setting.	MISSED APPROACH: Climb to 4000 direct HAXAN and hold.
-----------	---	--

AWOS-3 119.025	MINNEAPOLIS CENTER 124.4 317.7	UNICOM 122.8 (CTAF) 0
--------------------------	--	---------------------------------



4 NM Holding Pattern				VGSI and descent angles not coincident (VGSI Angle 3.00/TCH 37).				4000	HAXAN		
4000 ← 336°				156° →							
				156°							
				3000							
				3.00° TCH 45							
				2200							
				7 NM							
				2.5 NM							
				0.5 NM							
				1.7 NM							
											
CATEGORY	A	B	C	D							
LP MDA	2040-1	581 (600-1)	2040-1¾	581 (600-1¾)							
LNAV MDA	2060-1	601 (600-1)	2060-1¾	601 (600-1¾)							
CIRCLING	2060-1	582 (600-1)	2060-1¾ 582 (600-1¾)	2080-2 602 (700-2)							

EC-3, 31 DEC 2020 to 28 JAN 2021

EC-3, 31 DEC 2020 to 28 JAN 2021