

APP CRS
113°

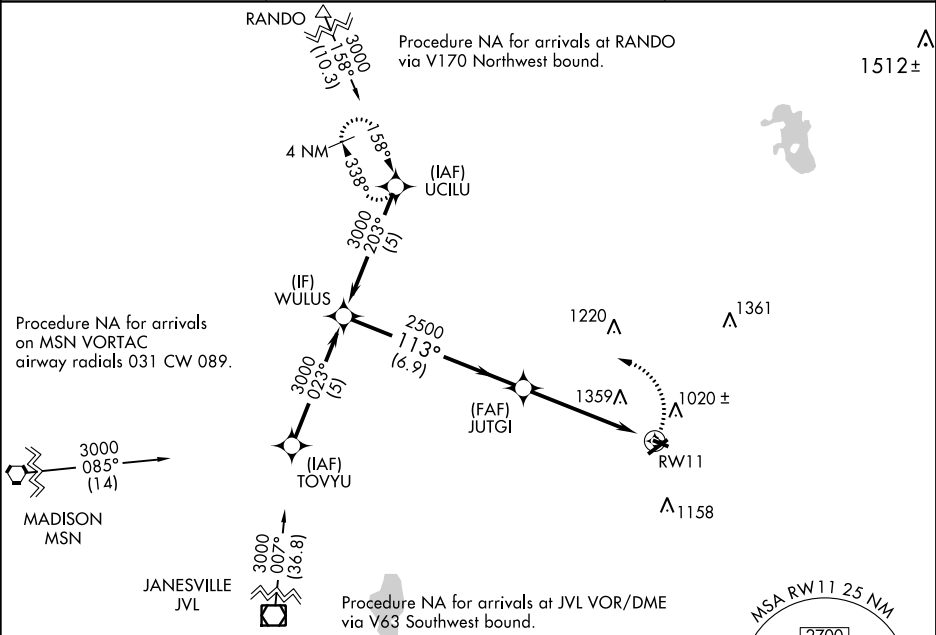
Rwy Idg **2801**
TDZE **833**
Apt Elev **833**

RNAV (GPS) RWY 11
WATERTOWN MUNI (RYV)

RNP APCH
When local altimeter setting not received, use Dodge County altimeter setting and increase all MDA 60 feet, increase LNAV visibility Cat. C and D ¼ mile, increase Circling visibility Cat. C ¼ mile. VDP NA when using Dodge County altimeter setting. Circling Rwy 23 NA at night.

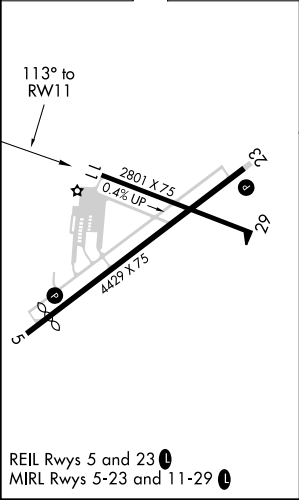
MISSED APPROACH: Climbing left turn to 3000 direct UCILU and hold.

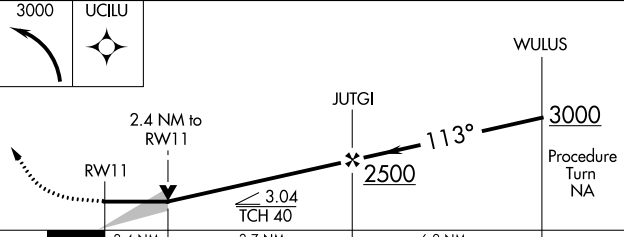
AWOS-3 119.975	MADISON APP CON ★ 119.15 343.7	UNICOM 122.8 (CTAF) 0
--------------------------	------------------------------------------	---------------------------------



ELEV 833

TDZE 833



				
CATEGORY	A	B	C	D
LNAV MDA	1640-1 807 (900-1)	1640-1¼ 807 (900-1¼)	1640-2¼ 807 (900-2¼)	1640-2½ 807 (900-2½)
CIRCLING	1640-1 807 (900-1)	1640-1¼ 807 (900-1¼)	1640-2¼ 807 (900-2¼)	1720-3 887 (900-3)