

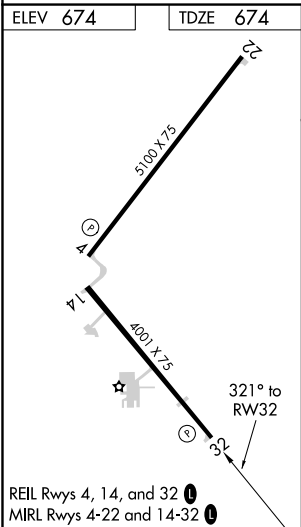
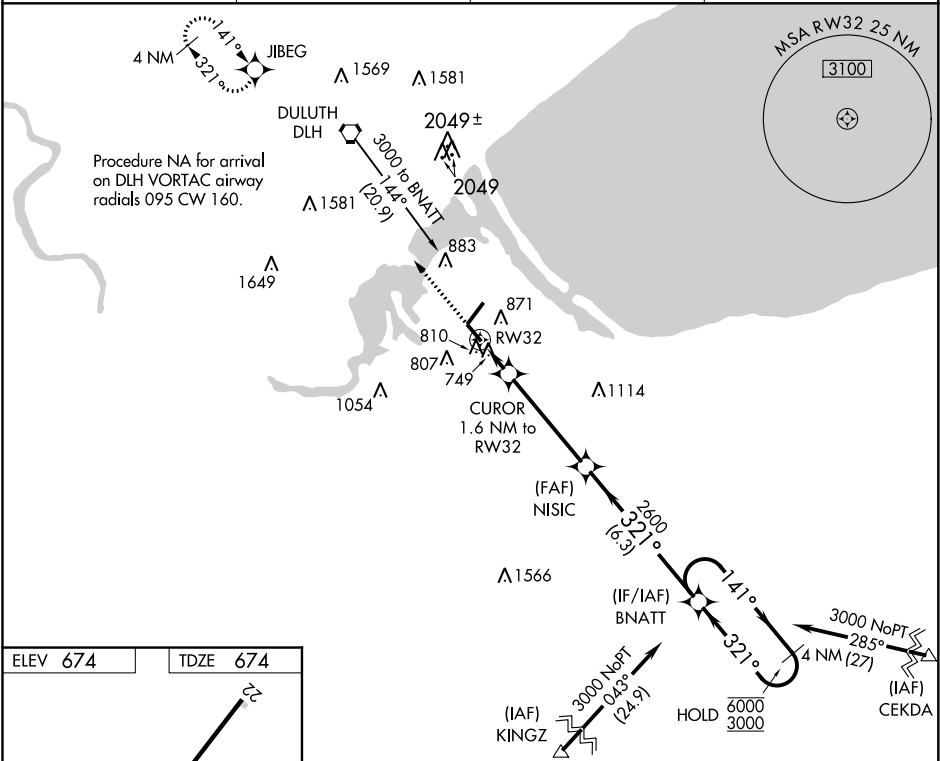
WAAS CH <b>72829</b> <b>W32A</b>	APP CRS <b>321°</b>	Rwy Idg TDZE Apt Elev	<b>4001</b> <b>674</b> <b>674</b>
--	------------------------	-----------------------------	---

RNAV (GPS) RWY 32

RICHARD I BONG (SUW)

RNP APCH.	MISSED APPROACH: Climb to 3100 direct JIBEG and hold.
<div><div></div><div></div></div> Rwy 32 helicopter visibility reduction below ¾ SM NA.	

AWOS-3 <b>120.35</b>	DULUTH APP CON <b>125.45 233.7</b>	CLNC DEL <b>124.8</b>	UNICOM <b>122.7 (CTAF) 0</b>
-------------------------	---------------------------------------	--------------------------	---------------------------------



3100	JIBEG	VGSI and descent angles not coincident (VGSI Angle 4.00/TCH 41).		4 NM	Holding Pattern
CUROR 1.6 NM to RWY 32		NISIC	BNATT	141° → 6000 ← 321° 3000	
RWY 32		2600			
0.9 NM to RWY 32		1220			
0.9 NM		0.7 NM	4.3 NM	6.3 NM	
CATEGORY	A	B	C	D	
LP MDA	1000-1 326 (400-1)				
LNAV MDA	1060-1	386 (400-1)	1060-1½	386 (400-1½)	
CIRCLING	1180-1	506 (600-1)	1180-1½ 506 (600-1½)	1240-2 566 (600-2)	

EC-3, 31 DEC 2020 to 28 JAN 2021

EC-3, 31 DEC 2020 to 28 JAN 2021