

WAAS CH <b>82208</b> <b>W09A</b>	APP CRS <b>092°</b>	Rwy Idg TDZE Apt Elev	<b>4201</b> <b>912</b> <b>914</b>
--	------------------------	-----------------------------	---

RNAV (GPS) RWY 9

DE KALB TAYLOR MUNI (DKB)

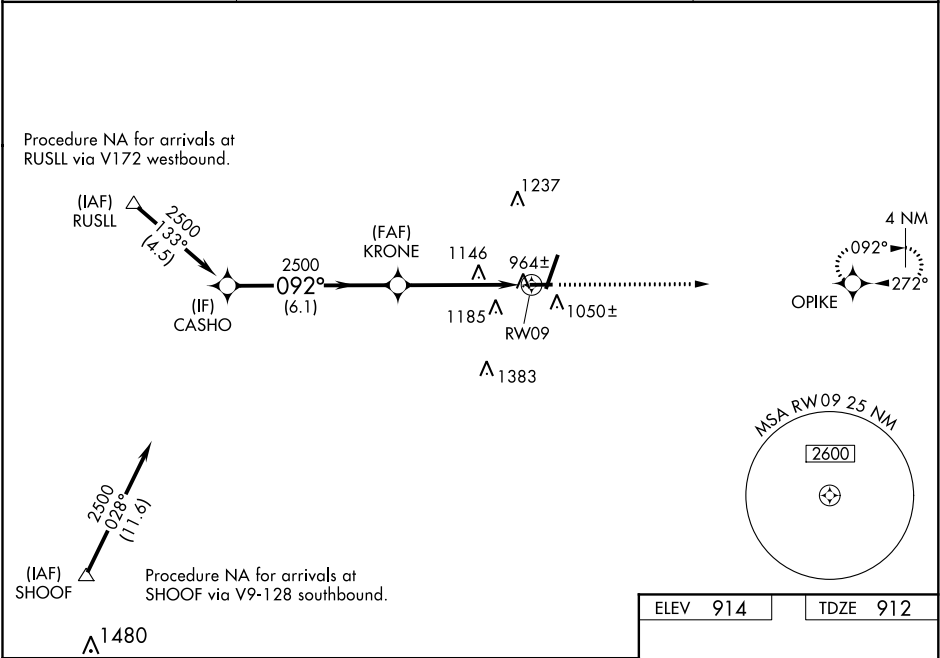
▼


⚠

When local altimeter setting not received, use Aurora altimeter setting and increase all DA 61 feet and all MDA 80 feet; increase all LPV and LNAV/VNAV visibilities, LNAV Cats C/D visibility, and Circling Cats C/D visibility ¼ mile. Baro-VNAV NA when using Aurora altimeter setting. VDP NA when using Aurora altimeter setting. For uncompensated Baro-VNAV systems, LNAV/VNAV NA below -16°C (4°F) or above 47°C (116° F). DME/DME RNP-0.3 NA. Visibility reduction by helicopters NA.

MISSED APPROACH: Climb to 3000 direct OPIKE and hold.

AWOS-3 <b>119.075</b>	CHICAGO APP CON <b>133.5 349.0</b>	UNICOM <b>122.7 (CTAF) 0</b>
--------------------------	---------------------------------------	---------------------------------



Procedure Turn NA	VGSI and RNAV glidepath not coincident (VGSI Angle 3.00/TCH 30).				3000 ↑	OPIKE 
CASHO	KRONE				*LNAV only.	
2500	092°				*1.6 NM to RW09	
GP 3.00° TCH 45	2500				RW09	
6.1 NM		3.2 NM		1.6		
CATEGORY	A	B	C	D		
LPV DA	1186-1 274 (300-1)					
LNAV/ VNAV DA	1543-2¼ 631 (700-2¼)					
LNAV MDA	1460-1	548 (600-1)	1460-1½ 548 (600-1½)	1460-1¾ 548 (600-1¾)		
CIRCLING	1460-1 546 (600-1)	1480-1 566 (600-1)	1540-1¾ 626 (700-1¾)	1540-2 626 (700-2)		

