

LOC/DME I-DJK 109.95 Chan 36 (Y)	APP CRS 022°	Rwy Idg TDZE 913 Apt Elev 914
--	------------------------	---

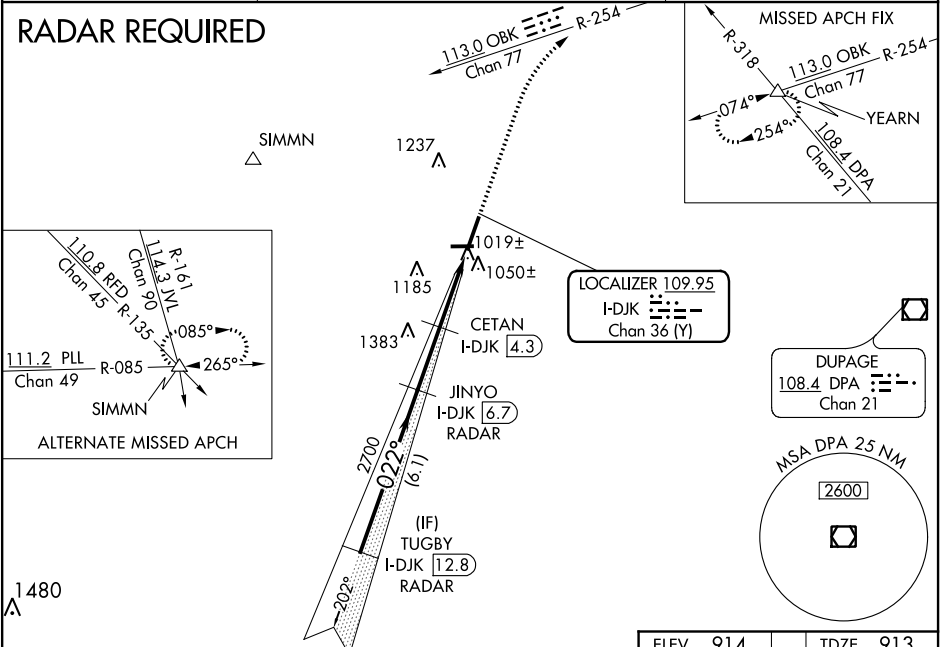
ILS or LOC RWY 2
DE KALB TAYLOR MUNI (DKB)

⚠ VDP NA when using Aurora altimeter setting. When local altimeter setting not received, use Aurora altimeter setting and increase all DA 61 feet and all MDA 80 feet, CETAN fix minimums increase Circling Cat C/D visibility ¼ mile. For inoperative MALSR, increase S-ILS 2 all Cats visibility to ¾ mile. CETAN fix minimums: For inoperative MALSR, increase S-LOC 2 Cat C/D visibility to 1 mile.

MALSR

MISSED APPROACH: Climb to 3000 on heading 022° and OBK VOR/DME R-254 to YEARN Int and hold.

AWOS-3 119.075	CHICAGO APP CON 133.5 349.0	UNICOM 122.7 (CTAF) 0
--------------------------	---------------------------------------	--



	TUGBY I-DJK [12.8] RADAR	JINYO I-DJK [6.7] RADAR	CETAN I-DJK [4.3]	3000 hdg 022°	OBK R-254	YEARN △
	2700	2700	2700	*1900		
	GS 3.00° TCH 55					
	6.1 NM	2.4 NM	1.9 NM	1.1 NM		
CATEGORY	A	B	C	D		
S-ILS 2		1113-½	200 (200-½)			
S-LOC 2	1900-¾ 987 (1000-¾)	1900-1 987 (1000-1)	1900-2½	987 (1000-2½)		
CIRCLING	1900-1¼ 986 (1000-1¼)	1900-1½ 986 (1000-1½)	1900-3	986 (1000-3)		
CETAN FIX MINIMUMS						
S-LOC 2	1280-½	367 (400-½)	1280-⅝	367 (400-⅝)		
CIRCLING	1360-1 446 (500-1)	1480-1 566 (600-1)	1540-1¾ 626 (700-1¾)	1540-2 626 (700-2)		

