

WAAS

CH **78331**

W36A

APP CRS

359°

Rwy Idg

3899

TDZE

680

Apt Elev

684

RNAV (GPS) RWY 36

INGERSOLL (CTK)

⚠

NA

Night landing: Rwy 09, 18, 27 NA. Baro-VNAV NA when using General Downing-Peoria Intl altimeter setting. For uncompensated Baro-VNAV systems, LNAV/VNAV NA below -16°C (4°F) or above 54°C (130°F). DME/DME RNP-0.3 NA. Helicopter visibility reduction below ¾ SM NA. When local altimeter setting not received, use General Downing-Peoria Intl altimeter setting and increase all DA 46 feet and all MDA 60 feet; increase LPV and LNAV/VNAV all Cats visibility ½ mile. VDP NA when using General Downing-Peoria Intl altimeter setting.

MISSED APPROACH:

Climb to 2500 direct LUYIL and hold.

AWOS-A

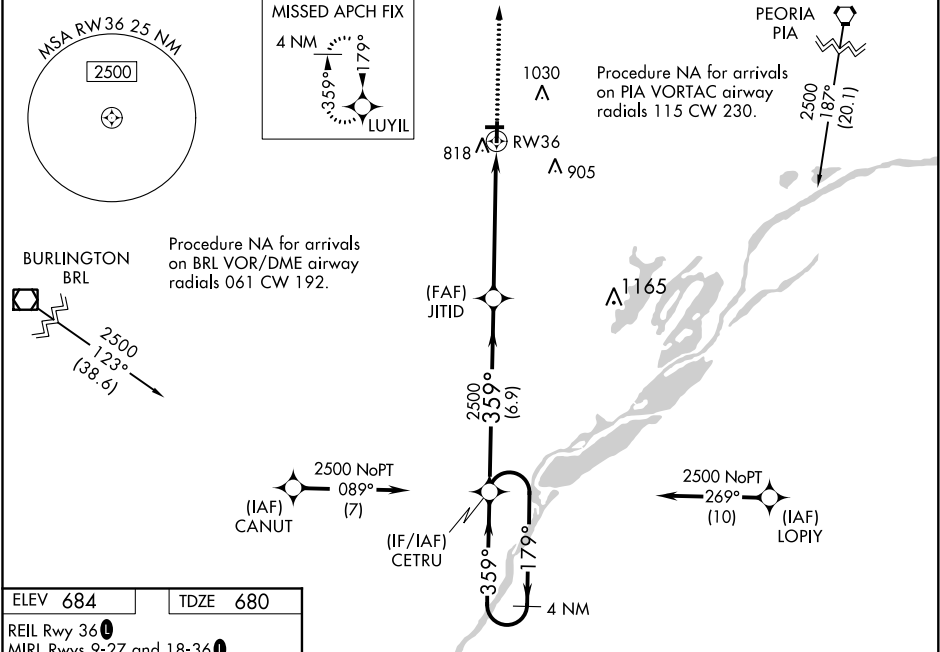
122.8

PEORIA APP CON

124.675 269.2

UNICOM

122.8 (CTAF) 0



ELEV 684	TDZE 680
REIL Rwy 36	MIRL Rwy 9-27 and 18-36
*LNAV only.	
RW36	
JITID	
CETRU	
4 NM Holding Pattern	
GP 3.00° TCH 40	
CATEGORY	A B C D
LPV DA	930-7½ 250 (300-7½) NA
LNAV/VNAV DA	998-1½ 318 (400-1½) NA
LNAV MDA	1120-1 440 (500-1) 1120-1½ 440 (500-1½) NA
CIRCLING	1140-1 456 (500-1) 1140-1½ 456 (500-1½) NA