

APP CRS	Rwy Idg	4001
321°	TDZE	322
	Apt Elev	322

RNAV (GPS) RWY 32
CAIRO RGNL (CIR)

<p>⚠ DME/DME RNP-0.3 NA. Rwy 32 Straight-In and Circling minimums NA at night. Circling to Rwy 14 and Rwy 20 NA at night. When local altimeter not received, use Cape Girardeau altimeter setting and raise all MDA 60 feet and increase S-32 Cat C visibility 1/8 mile and Circling Cat C visibility 1/4 mile. Helicopter visibility reduction below 1 SM NA.</p>	<p>MISSED APPROACH: Climb to 3000 direct ZIDPA and hold.</p>
---	--

AWOS-3 118.025	MEMPHIS CENTER 133.65 292.15	UNICOM 122.8 (CTAF) 0
-------------------	---------------------------------	---------------------------------

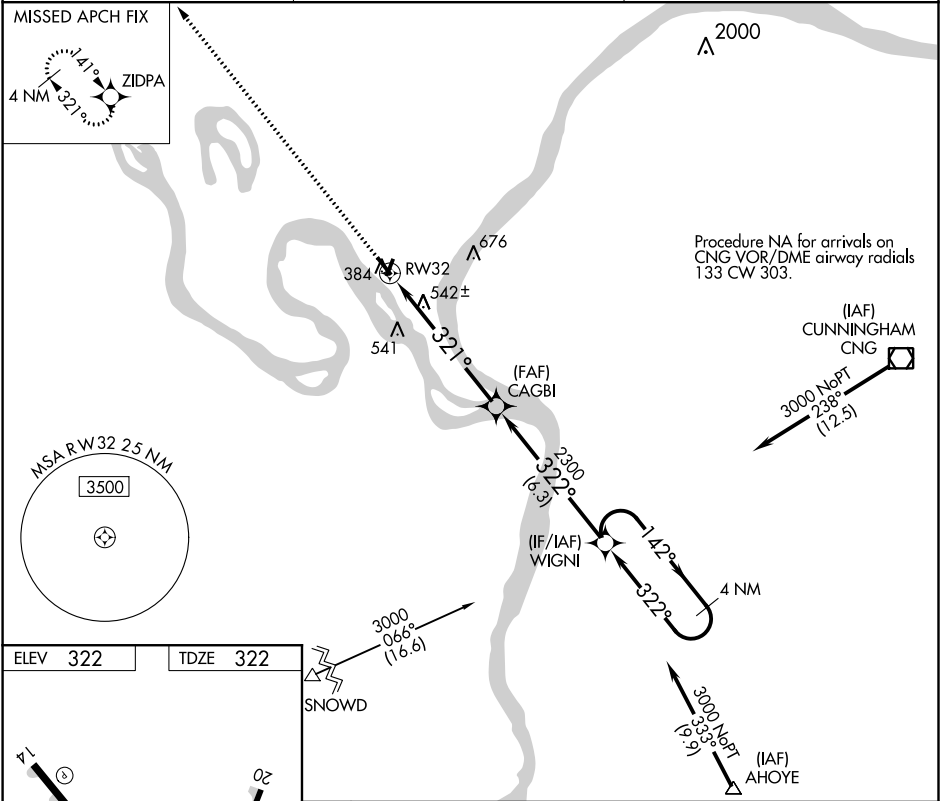


Diagram showing runway layout and distances:

- Runway 14 (RW14) and Runway 20 (RW20) are parallel, separated by 400' X 100'.
- Runway 14-32 (RW14-32) is perpendicular to RW14 and RW20, separated by 3200' X 60'.
- Runway 32 (RW32) is perpendicular to RW14-32, separated by 321° to RW32.

Diagram showing the 4 NM Holding Pattern around WIGNI:

- The holding pattern is a series of turns around WIGNI.
- The pattern includes a 142° turn to 3000 and a 322° turn to 2300.
- The distance from RW32 to WIGNI is 6.1 NM.
- The distance from WIGNI to CAGBI is 6.3 NM.
- The distance from CAGBI to RW32 is 3.00° TCH 40'.

CATEGORY	A	B	C	D
LNNAV MDA	860-1	538 (600-1)	860-1½ 538 (600-1½)	NA
C CIRCLING	860-1 538 (600-1)	900-1 578 (600-1)	1020-2 698 (700-2)	NA

REIL Rwy 14
MIRL Rwy 2-20
MIRL Rwy 14-32 **0**

3000 ZIDPA

WIGNI 4 NM Holding Pattern

CAGBI

RW32

6.1 NM 6.3 NM

CATEGORY	A	B	C	D
LNNAV MDA	860-1	538 (600-1)	860-1½ 538 (600-1½)	NA
C CIRCLING	860-1 538 (600-1)	900-1 578 (600-1)	1020-2 698 (700-2)	NA