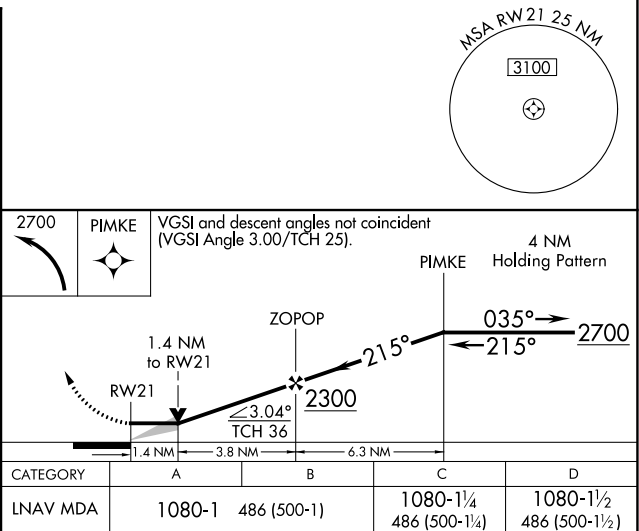
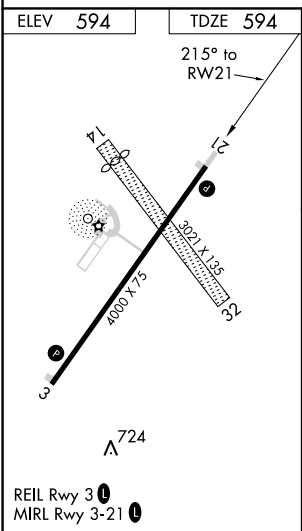
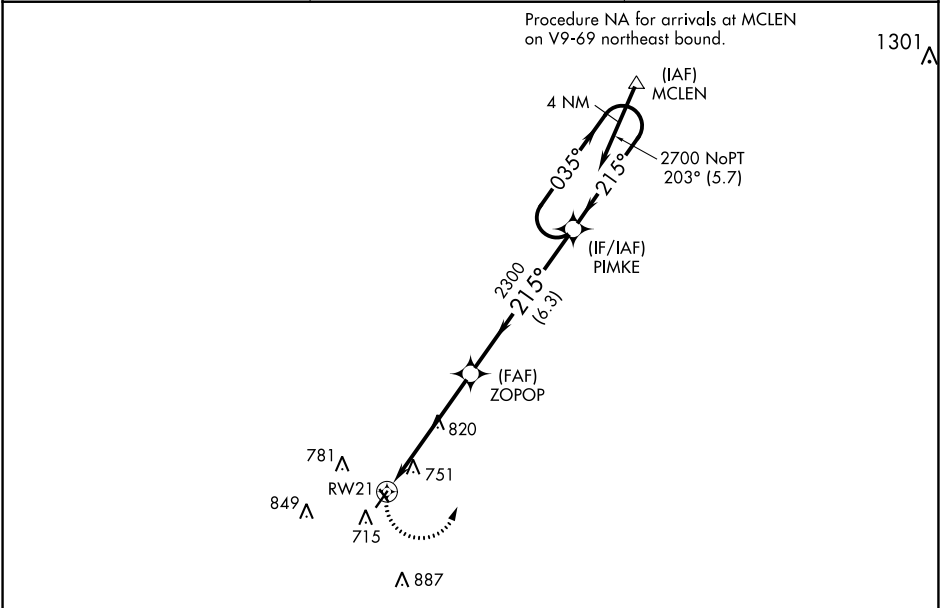


APP CRS	Rwy Idg	4000
215°	TDZE	594
	Apt Elev	594

RNAV (GPS) RWY 21
LOGAN COUNTY (AAA)

RNP APCH.	MISSED APPROACH: Climbing left turn to 2700 direct PIMKE and hold.
If local altimeter setting not received, use Springfield, IL altimeter setting and increase all MDAs 60 feet. VDP NA with Springfield, IL altimeter setting. Rwy 21 helicopter visibility reduction below 3/4 SM NA.	

AWOS-3 118.775	SPRINGFIELD APP CON ★ 126.15 323.0	UNICOM 122.8 (CTAF) 0
-------------------	---------------------------------------	--------------------------



EC-3, 31 DEC 2020 to 28 JAN 2021

EC-3, 31 DEC 2020 to 28 JAN 2021