

VOR BJB
109.8

APP CRS
232°

Rwy Idg **3897**
TDZE **884**
Apt Elev **887**

VOR RWY 24
WEST BEND MUNI (ETB)

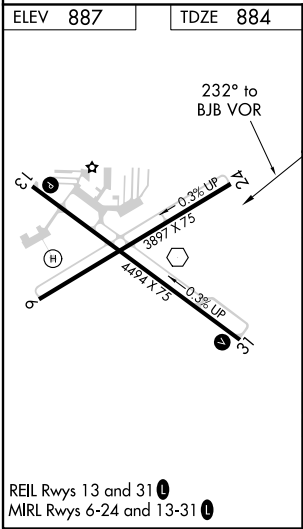
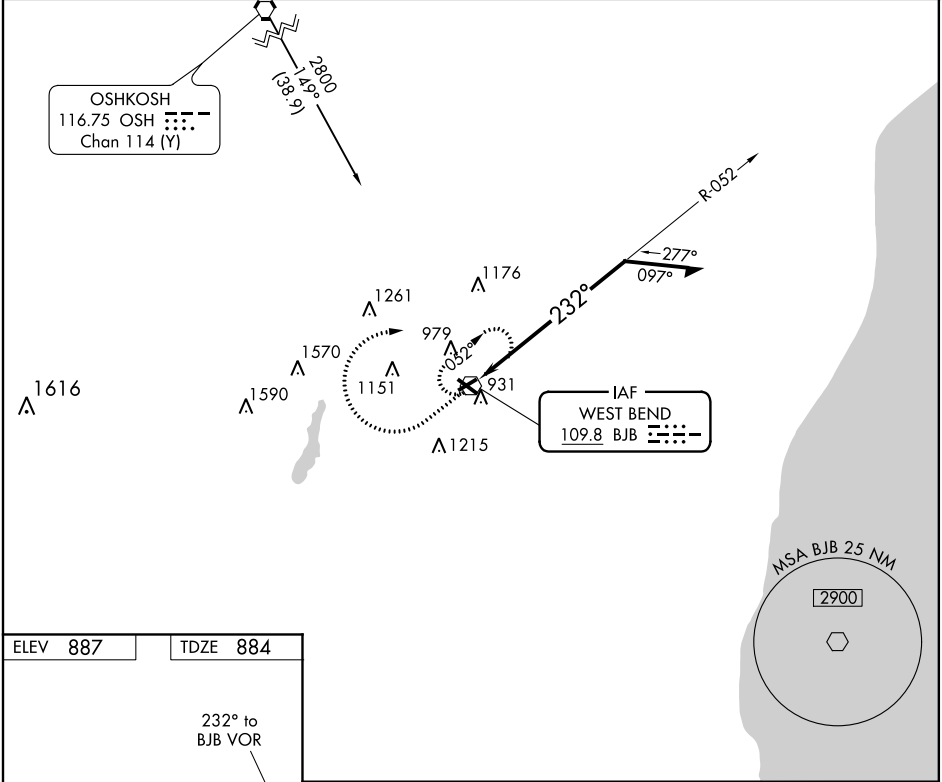
▼




⚠

Helicopter visibility reduction below 1 SM NA. When local altimeter setting not received, use Milwaukee/Lawrence J. Timmerman altimeter setting and increase all MDA 80 feet, increase all Cat C/D visibilities ¼ mile. Night landing: Rwy 6, 24 NA.

MISSED APPROACH: Climb to 1900 then climbing right turn 2700 direct BJB VOR and hold, continue climb-in-hold to 2700.

AWOS-3 120.0	MILWAUKEE APP CON 125.35 307.0	CLNC DEL 124.75	UNICOM 122.8 (CTAF)
------------------------	--	---------------------------	-------------------------------



1900	2700	BJB			
					
<div><div><div>BJB VOR</div><div><div><div>052°</div><div>2700</div></div><div><div>232°</div></div></div><div><div>Remain within 10 NM</div></div></div></div>					
CATEGORY	A	B	C	D	
S-24	1500-1	616 (700-1)	1500-1¾ 616 (700-1¾)	1500-2 616 (700-2)	
CIRCLING	1500-1	613 (700-1)	1500-1¾ 613 (700-1¾)	1520-2 633 (700-2)	