

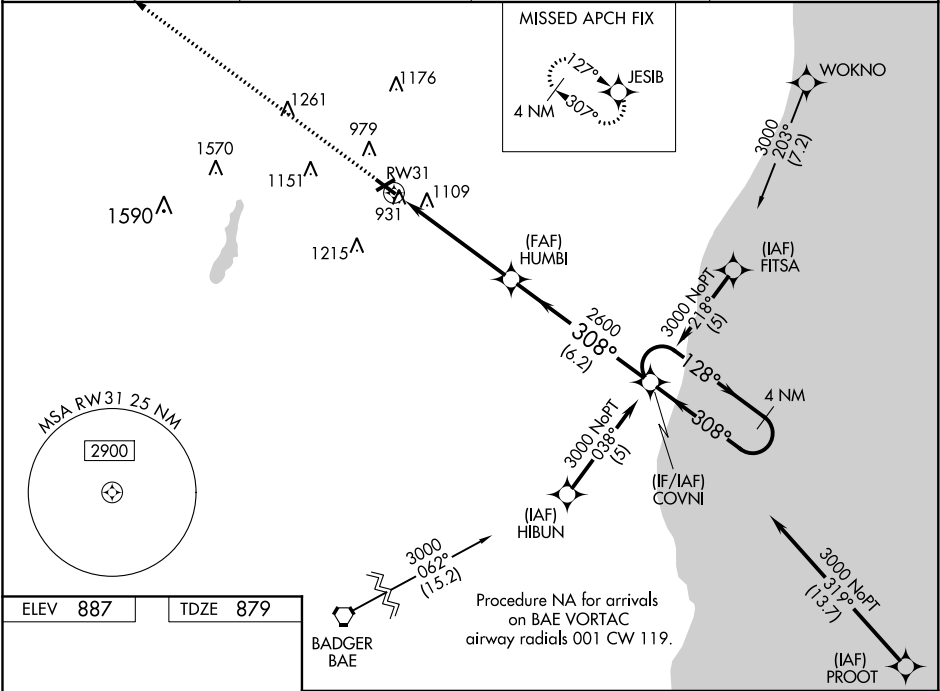
WAAS CH 93816 W31A	APP CRS 308°	Rwy Idg TDZE 879 Apt Elev 887
--	------------------------	---

RNAV (GPS) RWY 31
WEST BEND MUNI (E/TB)

⚠ Baro-VNAV NA when using Milwaukee/Lawrence J. Timmerman altimeter setting. For uncompensated Baro-VNAV systems, LNAV/VNAV NA below -16°C (4°F) or above 47°C (116°F). DME/DME RNP-0.3 NA. Helicopter visibility reduction below ¾ SM NA. When local altimeter setting not received, use Milwaukee/Lawrence J. Timmerman altimeter setting and increase all DA 64 feet and all MDA 80 feet. Increase LPV all Cats and LNAV and Circling Cats C/D visibility ¼ mile. Night landing: Rwy 6 NA.

MISSED APPROACH:
Climb to 3000 direct JESIB and hold.

AWOS-3 120.0	MILWAUKEE APP CON 125.35 307.0	CLNC DEL 124.75	UNICOM 122.8 (CTAF) 📻
------------------------	--	---------------------------	--



ELEV 887 TDZE 879

REIL Rwy 13 and 31 **📻**
MIRL Rwy 6-24 and 13-31 **📻**

3000	JESIB	VGSI and RNAV glidepath not coincident (VGSI Angle 3.00/TCH 28).	COVNI	4 NM Holding Pattern
HUMBI		128° → 3000		
RW31		← 308°		
2600		GP 3.00° TCH 45		
5.2 NM		6.2 NM		
CATEGORY	A	B	C	D
LPV DA	1175-1 296 (300-1)			
LNAV/VNAV DA	1482-2 603 (600-2)			
LNAV MDA	1420-1 541 (600-1)	1420-1½ 541 (600-1½)	1420-1¾ 541 (600-1¾)	
CIRCLING	1420-1 533 (600-1)	1460-1½ 573 (600-1½)	1520-2 633 (700-2)	

EC-3, 31 DEC 2020 to 28 JAN 2021

EC-3, 31 DEC 2020 to 28 JAN 2021