

WAAS CH 70716 W24A	APP CRS 240°	Rwy Idg TDZE Apt Elev	3897 884 887
--	------------------------	-----------------------------	---

RNAV (GPS) RWY 24

WEST BEND MUNI (ETB)

RNP APCH.

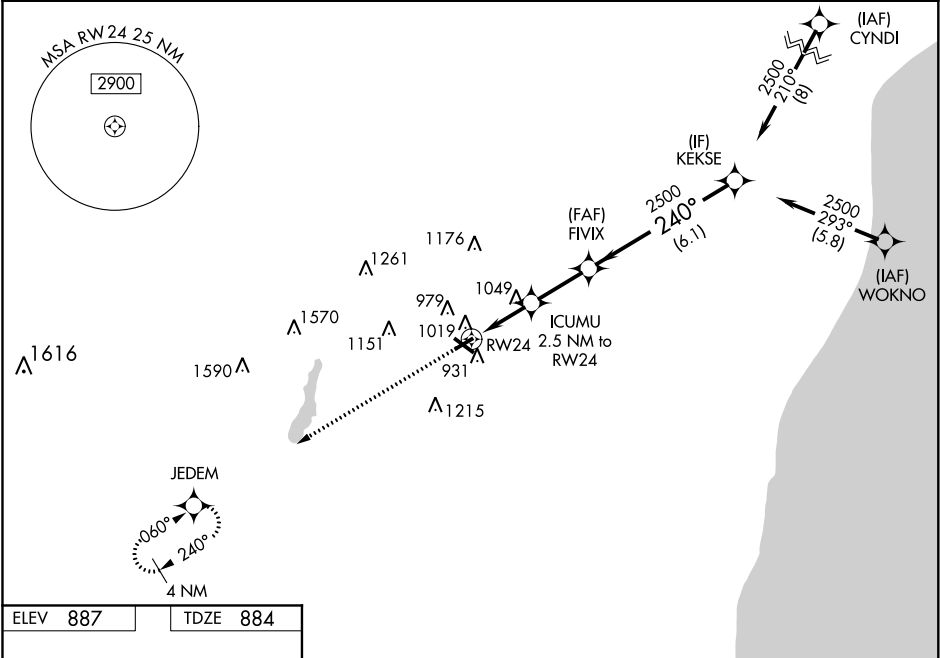
▼

▲

For uncompensated Baro-VNAV systems, LNAV/VNAV NA below -16°C or above 47°C. Rwy 24 helicopter visibility reduction below ¼ SM NA. Baro-VNAV and VDP NA when using Lawrence J Timmerman altimeter setting. When local altimeter setting not received, use Lawrence J Timmerman altimeter setting: increase LPV DA to 1260 feet, LNAV/VNAV DA to 1433 feet and all visibilities ¼ SM; increase all MDAs 80 feet and visibility LNAV Cat D and Circling Cat C/D ¼ SM.

MISSED APPROACH:
Climb to 3000 direct JEDEM and hold.

AWOS-3 120.0	MILWAUKEE APP CON 125.35 307.0	CLNC DEL 124.75	UNICOM 122.8 (CTAF) 0
------------------------	--	---------------------------	---------------------------------



ELEV 887	TDZE 884
----------	----------

3000

JEDEM

240° to RW24

0.3% UP

0.3% UP

4494 X 75

3897 X 75

* LNAV only

ICUMU
2.5 NM to RW24

FIVIX

KEKSE

1.2 NM

1.3 NM

2.4 NM

6.1 NM

240°

240°

2500

2500

1720

Procedure Turn NA

2500

GP 3.00°

TCH 45

CATEGORY	A	B	C	D
LPV DA	1196-1 312 (400-1)			
LNAV/VNAV DA	1369-1¼ 485 (500-1¼)			
LNAV MDA	1300-1	416 (500-1)	1300-1¼	416 (500-1¼)
CIRCLING	1420-1	533 (600-1)	1460-1½ 573 (600-1½)	1520-2 633 (700-2)

REIL Rwy 13 and 31 0
MIRL Rwy 6-24 and 13-31 0