

APP CRS  
**127°**

Rwy Idg  
**4494**

TDZE  
**882**

Apt Elev  
**887**

RNAV (GPS) RWY 13

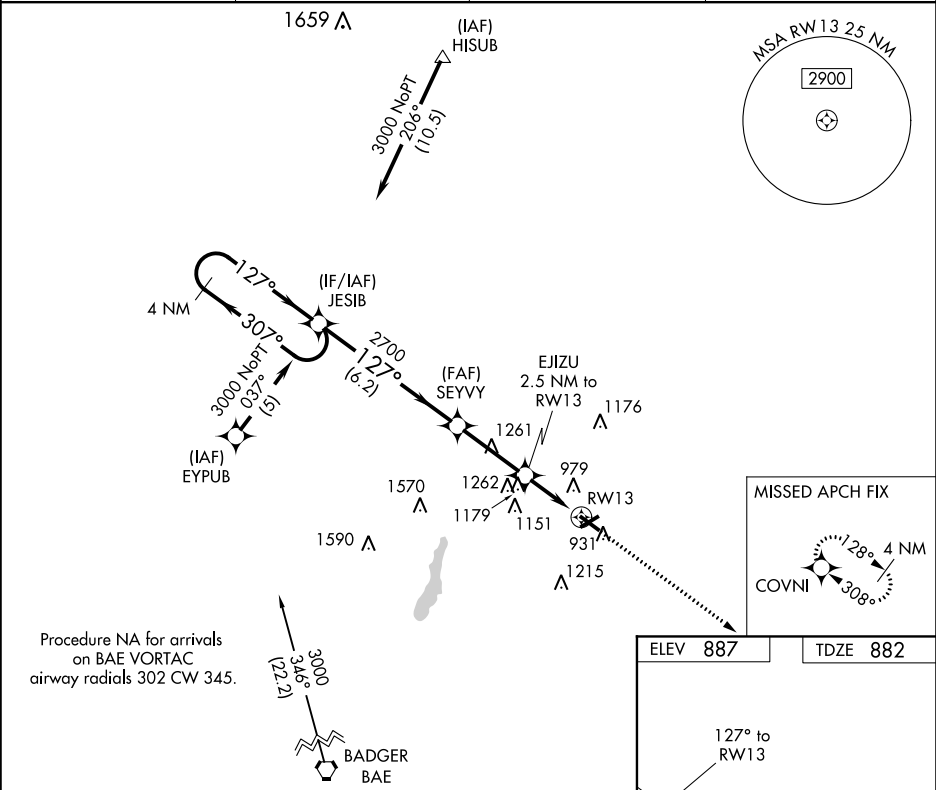
WEST BEND MUNI (ETB)

⚠

DME/DME RNP-0.3 NA. When local altimeter setting not received, use Milwaukee/Lawrence J. Timmerman altimeter setting and increase all MDA 80 feet, and increase LNAV Cats C/D and Circling Cat C visibility ½ mile, and Circling Cat D visibility ¼ mile. Night landing: Rwy 6 NA. Helicopter visibility reduction below ¾ SM NA.

MISSED APPROACH:  
Climb to 3000 direct COVNI and hold.

AWOS-3 <b>120.0</b>	MILWAUKEE APP CON <b>125.35 307.0</b>	CLNC DEL <b>124.75</b>	UNICOM <b>122.8 (CTAF) 0</b>
------------------------	--	---------------------------	---------------------------------



<div>4 NM Holding Pattern</div> <div>JESIB</div> <div>3000 ← 307°</div> <div>127° →</div> <div>127°</div> <div>2700</div> <div>3.05° TCH 37</div> <div>EJIZU 2.5 NM to RW13</div> <div>1720</div> <div>6.2 NM</div> <div>3 NM</div> <div>2.5</div> <div>3000</div> <div>COVNI</div>					
CATEGORY	A	B	C	D	
LNAV MDA	1480-1 598 (600-1)		1480-1½ 598 (600-1½)	1480-1¾ 598 (600-1¾)	
CIRCLING	1480-1 593 (600-1)		1480-1½ 593 (600-1½)	1520-2 633 (700-2)	

REIL Rwy 13 and 31

MIRL Rwy 6-24 and 13-31