

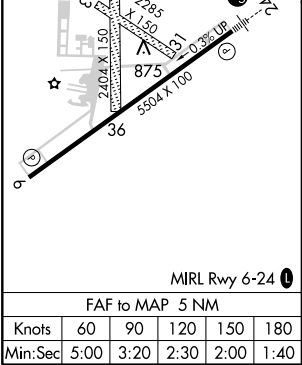
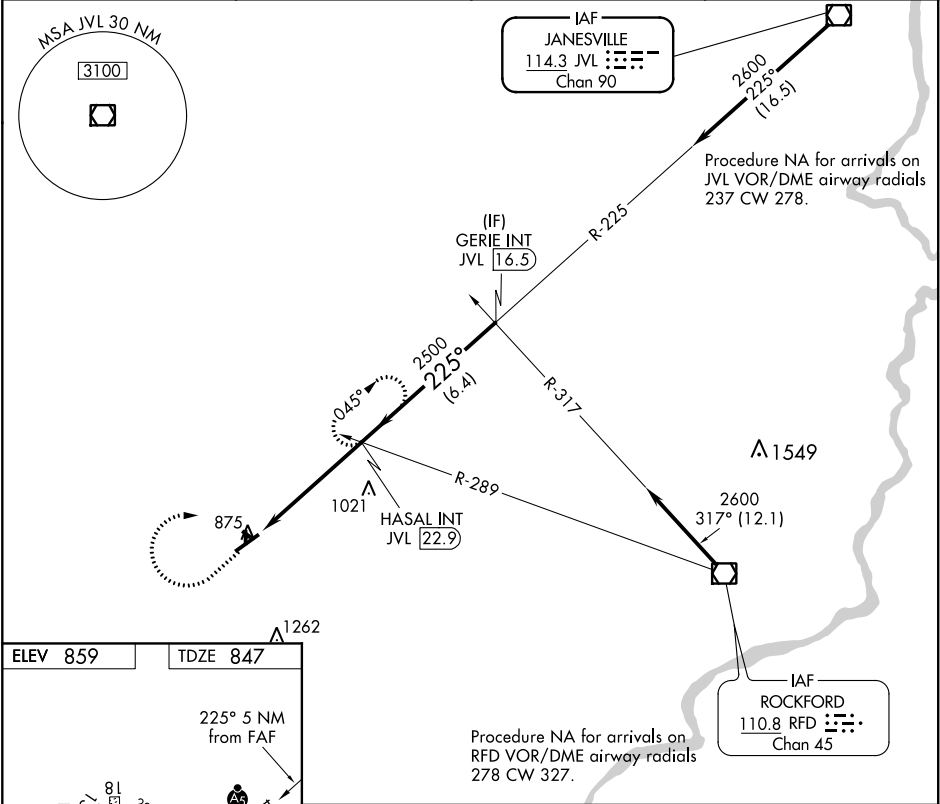
VOR/DME JVL	APP CRS	Rwy Idg	5504
114.3	225°	TDZE	847
Chan 90		Apt Elev	859

VOR RWY 24
ALBERTUS (F'EP)

When local altimeter setting not received, use Rockford altimeter setting and increase all MDA 80 feet and Circling Cat C visibility ¼ mile.
Circling NA to Rwys 13,18,31,36. Inoperative table does not apply.

MALSR MISSED APPROACH: Climb to 2500 via JVL VOR/DME R-225 then right turn via heading 090° and JVL VOR/DME R-225 to HASAL INT 22.9 DME and hold.

AWOS-3 120.525	ROCKFORD APP CON 126.0 327.0	CLNC DEL 121.85	UNICOM 122.8 (CTAF) 0
-------------------	---------------------------------	--------------------	--------------------------



2500	hdg 090°	JVL R-225	JVL R-225	HASAL INT	HASAL INT JVL 22.9	GERIE INT JVL 16.5	2600
					≤ 3.04° TCH 46	Procedure Turn NA	
5 NM		5 NM		6.4 NM			
CATEGORY	A	B	C	D			
S-24	1280-1 433 (500-1)	1280-1¼ 433 (500-1¼)	1280-1½ 433 (500-1½)	1280-2 433 (500-2)			
CIRCLING	1300-1 441 (500-1)	1340-1¼ 481 (500-1¼)	1380-1½ 521 (500-1½)	1440-2 581 (600-2)			

EC-3, 31 DEC 2020 to 28 JAN 2021

EC-3, 31 DEC 2020 to 28 JAN 2021