

WAAS
CH **56404**
W06A

APP CRS
054°

Rwy Idg
TDZE **859**
Apt Elev **859**

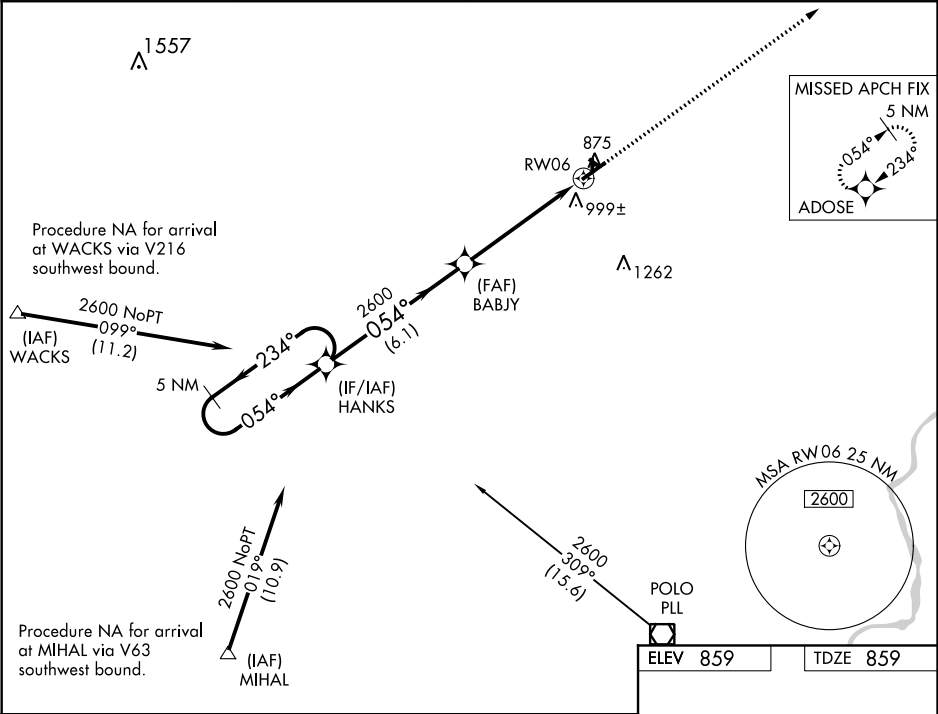
RNAV (GPS) RWY 6

ALBERTUS (FEP)

When local altimeter setting not received, use Rockford altimeter setting: increase LPV DA to 1176 feet, LNAV/VNAV DA to 1438 feet and all visibilities ¼ mile; increase all MDA 80 feet and LNAV Cat C/D and Circling Cat C visibility ¼ mile. DME/DME RNP-0.3 NA. For uncompensated Baro-VNAV systems, LNAV/VNAV NA below -16° C (4° F) or above 47° C (116° F). Baro-VNAV and VDP NA when using Rockford altimeter setting. Circling NA to Rwy 13, 18, 31, 36.

MISSED APPROACH:
Climb to 2600 direct ADOSE and hold.

AWOS-3 120.525	ROCKFORD APP CON 126.0 327.0	CLNC DEL 121.85	UNICOM 122.8 (CTAF) 0
--------------------------	--	---------------------------	---------------------------------



5 NM Holding Pattern

2600 ← 234°

054° →

GP 3.00° TCH 50

HANKS

BABJY

2600

6.1 NM

4.1 NM

1.1 NM

2600

ADOSE

*1.1 NM to RW06

*LNAV only.

RW06

CATEGORY	A		B		C		D	
LPV DA			1109-¾		250 (300-¾)			
LNAV/VNAV DA			1371-1¾		512 (600-1¾)			
LNAV MDA	1260-1		401 (500-1)		1260-1½		401 (500-1½)	
CIRCLING	1300-1 441 (500-1)		1340-1 481 (500-1)		1380-1½ 521 (600-1½)		1440-2 581 (600-2)	

