

APP CRS	Rwy Idg	5070
261°	TDZE	934
	Apt Elev	934

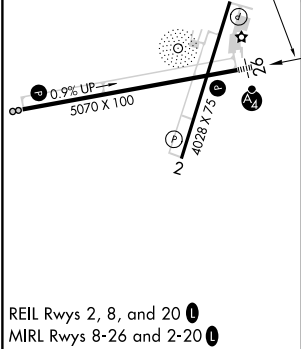
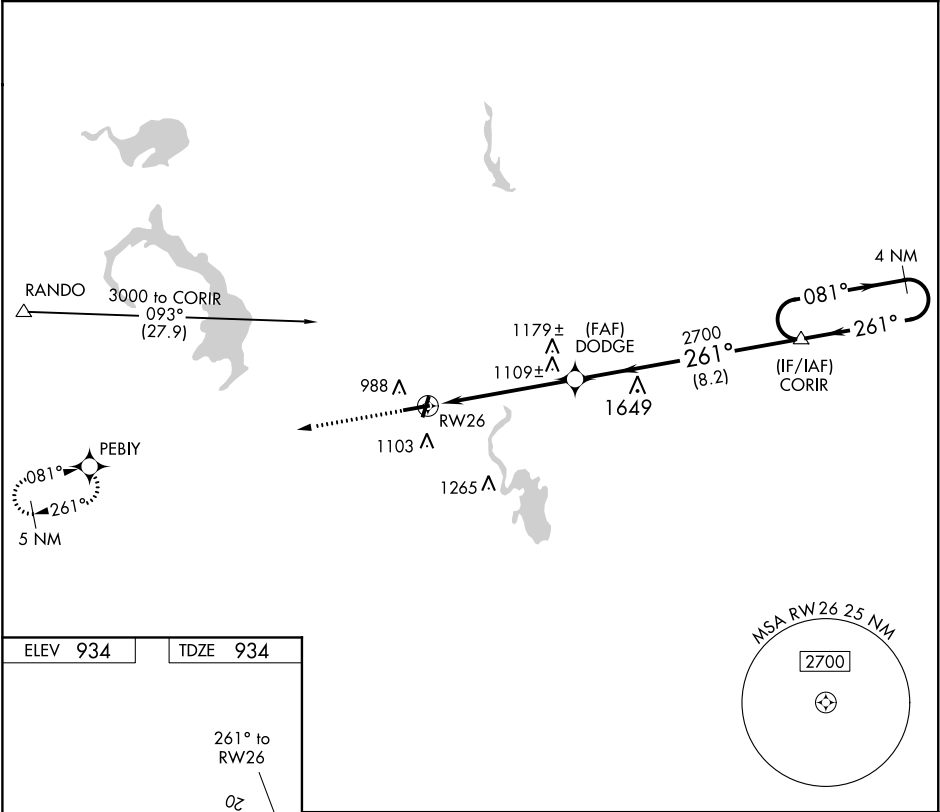
RNAV (GPS) RWY 26
DODGE COUNTY(UNU)

When local altimeter setting not received, use Dane County Rgnl-Truax Field altimeter setting and increase all MDAs 100 feet, and increase Circling Cat C visibility ¼ SM. DME/DME RNP-0.3 NA. Visibility reduction by helicopters NA. Inoperative table does not apply.

MAISF

MISSED APPROACH: Climb to 3000 direct PEBIY and hold.

AWOS-3 120.825	MADISON APP CON 119.15 343.7	UNICOM 122.7 (CTAF) 1
-------------------	---------------------------------	--------------------------



3000

↑

PEBIY

✦

DODGE

CORIR

4 NM Holding Pattern

081° →

← 261°

3000

261°

2700

3.04°


TCH 34

5.4 NM

8.2 NM

RW26

261°

CATEGORY	A	B	C	D
LNAV MDA	1360-1	426 (500-1)	1360-1¼ 426 (500-1¼)	NA
 CIRCLING	1440-1	506 (600-1)	1440-1½ 506 (600-1½)	NA

EC-3, 31 DEC 2020 to 28 JAN 2021

EC-3, 31 DEC 2020 to 28 JAN 2021