

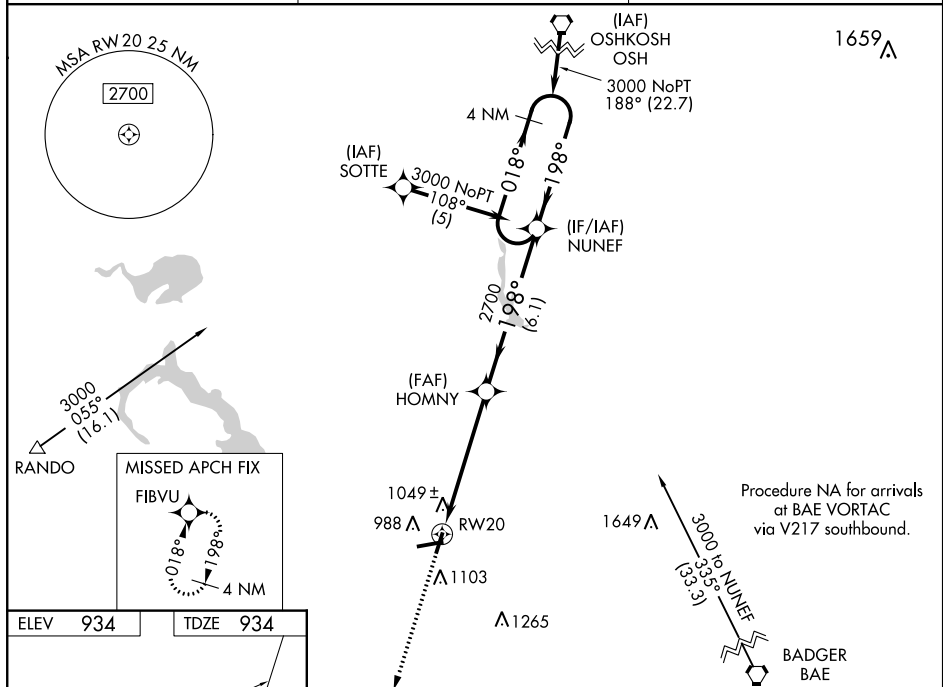
WAAS CH <b>61307</b> <b>W20A</b>	APP CRS <b>198°</b>	Rwy Idg TDZE Apt Elev	<b>4028</b> <b>934</b> <b>934</b>
--	------------------------	-----------------------------	---

# RNAV (GPS) RWY 20

**T** For uncompensated Baro-VNAV systems, LNAV/VNAV NA below -16° C (4° F) or above 54° C (130° F). DME/DME RNP-0.3 NA. When local altimeter setting not received, use Dane County Rgnl-Truax Field altimeter setting and increase all DA/MDA 100 feet, increase visibilities ½ mile. Baro-VNAV NA when using Dane County Rgnl-Truax Field altimeter setting. Visibility reduction by helicopters NA.

**MISSED APPROACH:**  
Climb to 3000 direct  
FIBVU and hold.

AWOS-3 <b>120.825</b>	MADISON APP CON <b>119.15 343.7</b>	UNICOM <b>122.7</b> (CTAF) <b>0</b>
--------------------------	--	--



198° to RW20

0.9% UP

5070 X 100

4028 X 75

20

2

8

20

2700

198°

018°

198°

4 NM Holding Pattern

NUNEF

HOMNY

RW20

5.4 NM

6.1 NM

GP 3.00°

TCH 40

VGS and descent angles not coincident (VGS Angle 3.00°/TCH 25°)

REIL Rwy 2, 8, and 20

MIRL Rwy 8-26 and 2-20

CATEGORY	A	B	C	D
LPV DA	1214-1	280 (300-1)		NA
LNAV/VNAV DA	1350-1½	416 (500-1½)		NA
LNAV MDA	1300-1	366 (400-1)		NA
<b>C</b> CIRCLING	1440-1	506 (600-1)	1440-1½ 506 (600-1½)	NA