

APP CRS  
**039°**

Rwy Idg  
**3598**

TDZE  
**472**

Apt Elev  
**482**

RNAV (GPS) RWY 4

OLNEY-NOBLE (OLY)

RNP APCH.

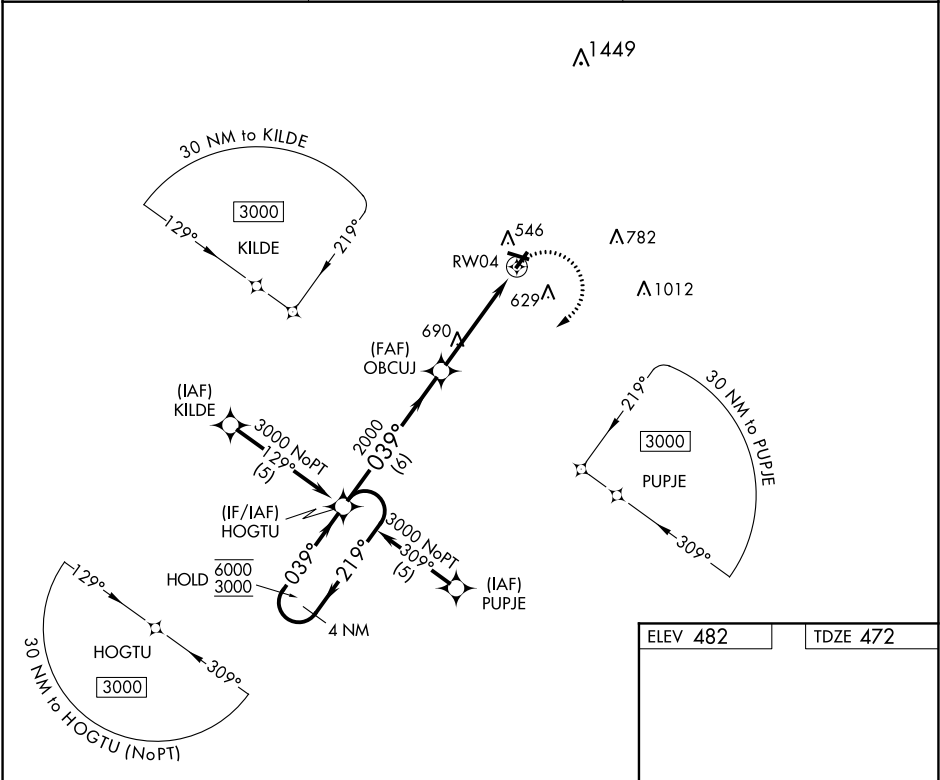
▼

⚠

Rwy 4 helicopter visibility reduction below ¾ SM NA. When local altimeter setting not received, use Evansville Rgnl altimeter setting and increase all MDA 140 feet and increase LNAV Cat C/D and Circling Cat C/D visibility ½ mile.

MISSED APPROACH:  
Climbing right turn to 3000 direct HOGTU and hold.

AWOS-3 <b>119.275</b>	KANSAS CITY CENTER <b>124.3 269.15</b>	UNICOM <b>123.0 (CTAF) 0</b>
--------------------------	---	---------------------------------



4 NM Holding Pattern

HOGTU

6000  
3000

219°

039°

OBCUJ

2000

3.04°

TCH 40

RW04

6 NM

4.6 NM

3000

HOGTU

CATEGORY	A	B	C	D
LNAV MDA	940-1	468 (500-1)	940-1 3/8	468 (500-1 3/8)
CIRCLING	960-1	478 (500-1)	960-1 1/2 478 (500-1 1/2)	1180-2 1/4 698 (700-2 1/4)

ELEV 482

TDZE 472

11

22

4099 X 75

0.3% UP

3598 X 80

039° to RW04

REIL Rwy 4 and 11 0

MIRL Rwy 4-22 and 11-29 0

EC-3, 31 DEC 2020 to 28 JAN 2021

EC-3, 31 DEC 2020 to 28 JAN 2021