

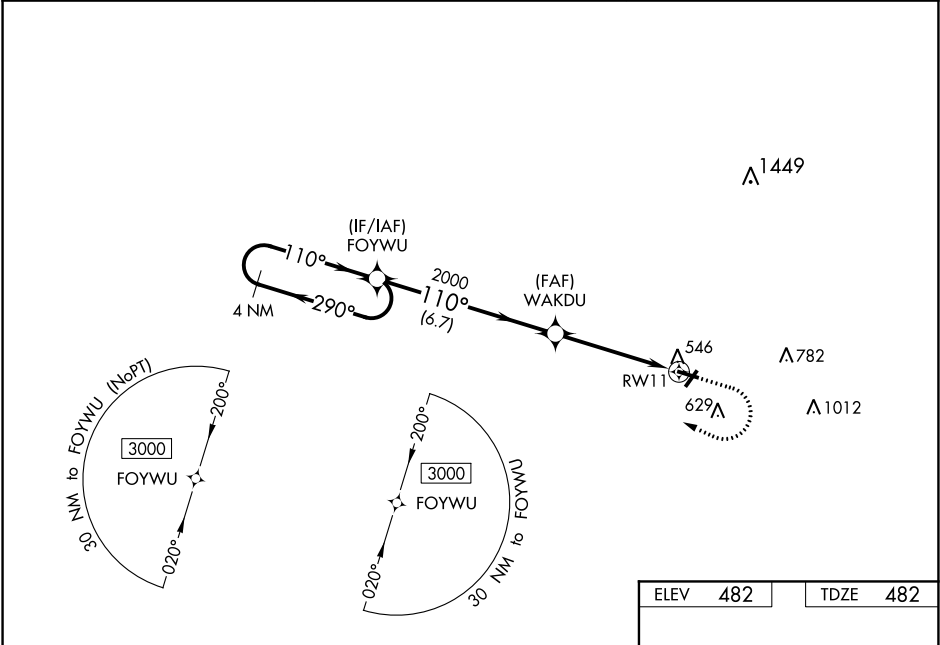
WAAS CH 82231 W11A	APP CRS 110°	Rwy Idg TDZE 482 Apt Elev 482
--	------------------------	---

RNAV (GPS) RWY 11

OLNEY-NOBLE (OLY)

RNP APCH.	<div><div>▼</div>Baro-VNAV NA when using Evansville altimeter setting. For uncompensated Baro-VNAV systems, LNAV/VNAV NA below -15°C or above 54°C. When local altimeter setting not received, use <div>▲</div> Evansville altimeter setting and increase all DAs 126 feet, MDAs 140 feet; increase LNAV/VNAV all Cats visibility ½ SM, LNAV Cat C/D ¾ SM and Circling Cat C ¼ SM and Cat D ½ SM.</div>	MISSED APPROACH: Climb to 1500 then climbing right turn to 3000 direct FOYWU and hold.
-----------	---	---

AWOS-3 119.275	KANSAS CITY CENTER 124.3 269.15	UNICOM 123.0 (CTAF) 0
--------------------------	---	---------------------------------



VGSI and RNAV glidepath not coincident (VGSI Angle 3.00/TCH 22).		1500	3000	FOYWU
4 NM Holding Pattern		↑	↷	✧
FOYWU		3000	290°	110°
GP 3.00° TCH 40		2000	110°	2000
WAKDU		2000	110°	2000
RW11		2000	110°	2000
6.7 NM		4.6 NM		
CATEGORY	A	B	C	D
LPV DA	732-1		250 (300-1)	
LNAV/VNAV DA	962-1½		480 (500-1½)	
LNAV MDA	920-1	438 (500-1)	920-1¼	438 (500-1¼)
CIRCLING	960-1	478 (500-1)	960-1½	1180-2¼
			478 (500-1½)	698 (700-2¼)

ELEV 482

TDZE 482

REIL Rwy 4 and 11 0

MREL Rwy 4-22 and 11-29 0

4099 X 75

2398 X 60

110° to RW11

0.3% UP