

LOC/DME I-LZW <b>110.5</b> Chan <b>42</b>	APP CRS <b>110°</b>	Rwy Idg <b>4099</b> TDZE <b>482</b> Apt Elev <b>482</b>	<b>LOC RWY 11</b> OLNEY-NOBLE (OLY)
---	------------------------	---	--

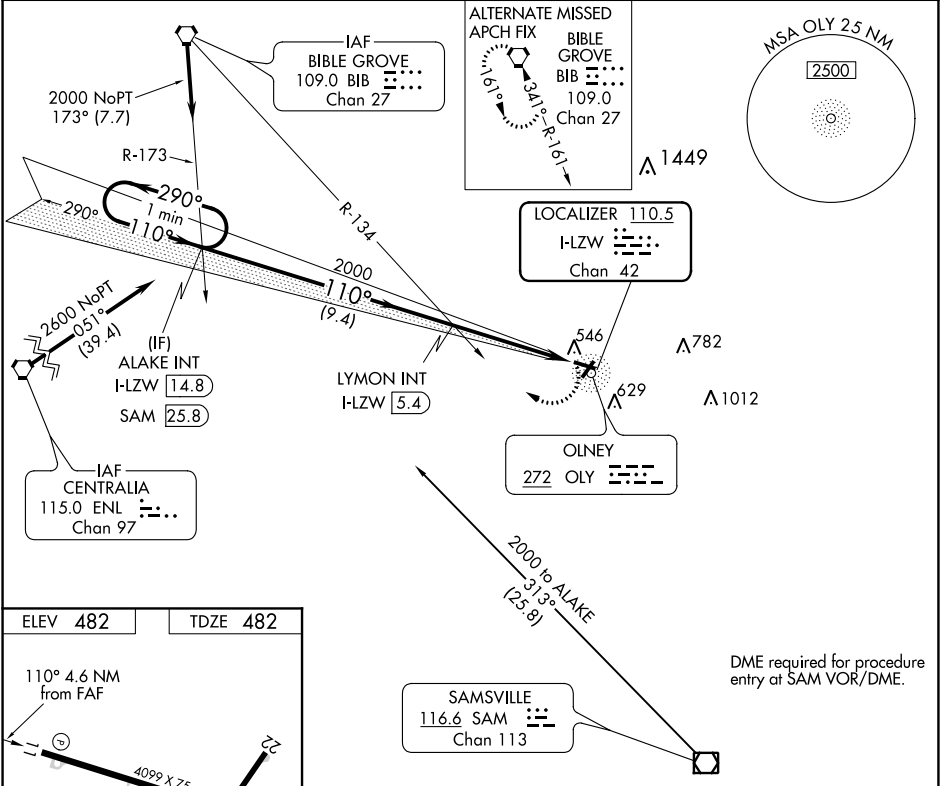
▼

NA

When local altimeter setting not received, use Evansville altimeter setting and increase all MDAs 140 feet, increase S-11 visibility Cat C/D ¾ SM, Circling Cat C ¼ SM and Cat D ½ SM.  
VDP NA with Evansville altimeter setting.

MISSED APPROACH: Climbing right turn to 2400 on heading 290° and on SAM VOR/DME R-313 to ALAKE INT/I-LZW LOC/DME 14.8 DME and hold.

AWOS-3 <b>119.275</b>	KANSAS CITY CENTER <b>124.3 269.15</b>	UNICOM <b>123.0 (CTAF)</b>
--------------------------	---	-------------------------------



ELEV 482	TDZE 482
110° 4.6 NM from FAF	4099 X 75 0.3% UP
REIL Rwy 4 and 11	MIRL Rwy 4-22 and 11-29
FAF to MAP 4.6 NM	
Knots 60 90 120 150 180	Min:Sec 4:36 3:04 2:18 1:50 1:32
CIRCLING	

One Minute Holding Pattern	ALAKE INT I-LZW 14.8 SAM 25.8	LYMON INT I-LZW 5.4	2400 hdg 290°	SAM R-313	ALAKE INT
2000	290° 110°	2000	110°	I-LZW 2.1	I-LZW 0.8
9.4 NM	3.3 NM	1.3 NM	3.03° TCH 45		
CATEGORY	A	B	C	D	
S-11	920-1 438 (500-1)		920-1¼ 438 (500-1¼)		
	960-1 478 (500-1)		960-1½ 478 (500-1½)	1180-2¼ 698 (700-2¼)	