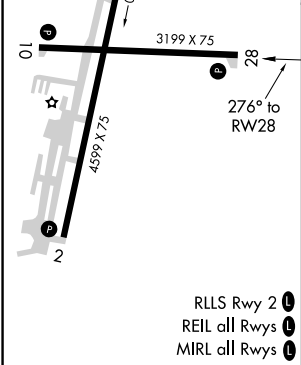
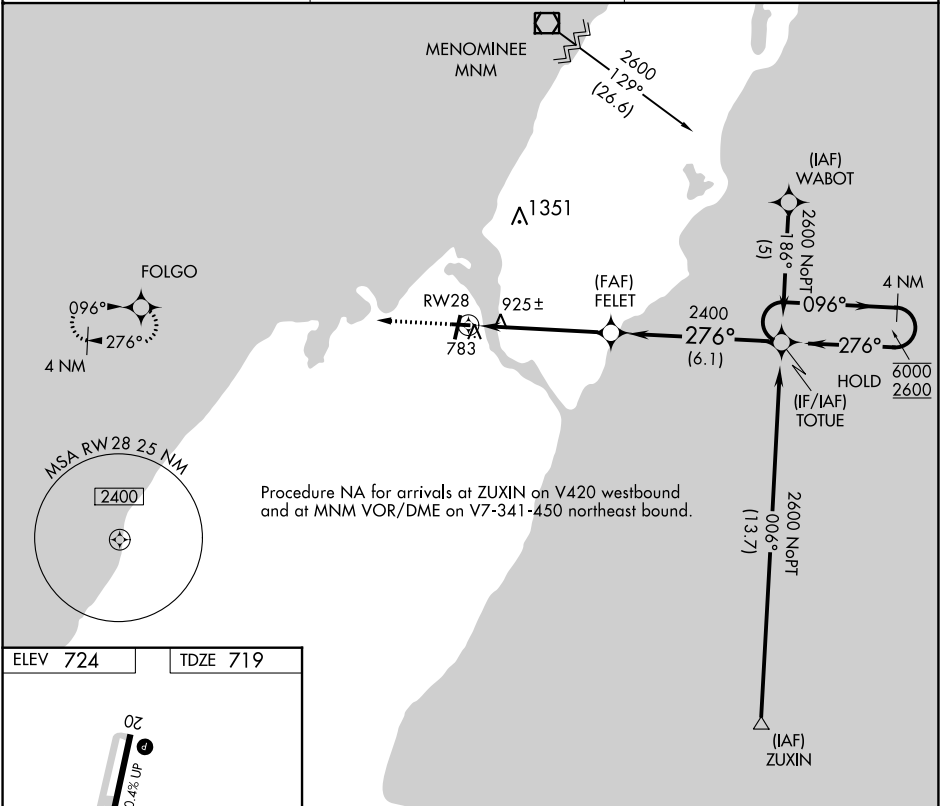


APP CRS	Rwy Idg	3199
276°	TDZE	719
	Apt Elev	724

RNAV (GPS) RWY 28
DOOR COUNTY CHERRYLAND (SUE)

RNP APCH.	MISSED APPROACH: Climb to 2600 direct FOLGO and hold.
▼ ▲ Rwy 28 helicopter visibility reduction below ¾ SM NA.	

AWOS-3 128.325	GREEN BAY APP CON ★ 119.25 338.2	UNICOM 122.7 (CTAF) 0
-------------------	-------------------------------------	--------------------------



<div>2600 ↑</div> <div>FOLGO </div>		Visual Segment - Obstacles.		4 NM Holding Pattern	
<div></div>					
CATEGORY	A		B	C	D
LNAV MDA	1240-1	521 (600-1)	1240-1½ 521 (600-1½)	NA	
C CIRCLING	1280-1	556 (600-1)	1280-1½ 556 (600-1½)	NA	

EC-3, 31 DEC 2020 to 28 JAN 2021

EC-3, 31 DEC 2020 to 28 JAN 2021