

WAAS

CH 81904

W02A

APP CRS

016°

Rwy Idg

4599

TDZE

724

Apt Elev

724

RNAV (GPS) RWY 2

DOOR COUNTY CHERRYLAND (SUE)

RNP APCH.

▼

▲

Rwy 2 helicopter visibility reduction below ¾ SM NA. For uncompensated Baro-VNAV systems, LNAV/VNAV NA below -16°C or above 54°C.

MISSED APPROACH:

Climb to 2600 direct VOBUY and hold.

AWOS-3PT

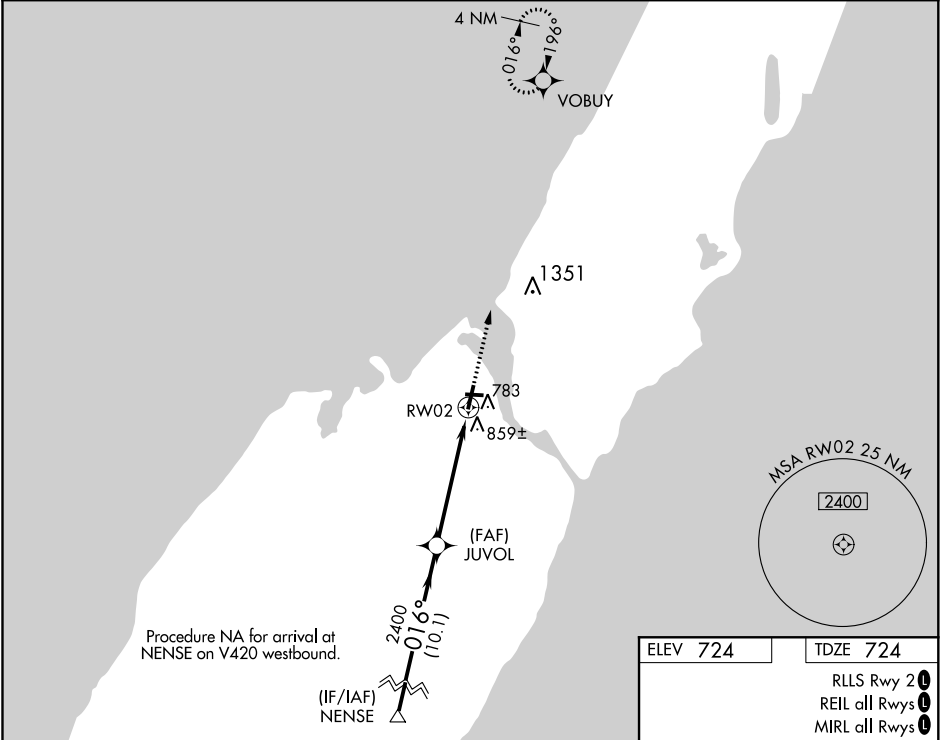
128.325

GREEN BAY APP CON ★

119.25 338.2

UNICOM

122.7(CTAF)0



NENSE		VGSI and RNAV glidepath angles not coincident (VGSI Angle 3.00/TCH 34).		2600	VOBUY
3500		JU VOL		2400	
GP 3.00°		2400		*1.1 NM to RWY 2	*LNAV only.
TCH 40		10.1 NM		4 NM	1.1 NM
CATEGORY	A	B	C	D	
LPV DA	1013-1		289 (300-1)		
LNAV/VNAV DA	1164-1½		440 (500-1½)		
LNAV MDA	1120-1	396 (400-1)	1120-1⅛	396 (400-1⅛)	
CIRCLING	1280-1	556 (600-1)	1280-1½	1280-2	
			556 (600-½)	556 (600-2)	

