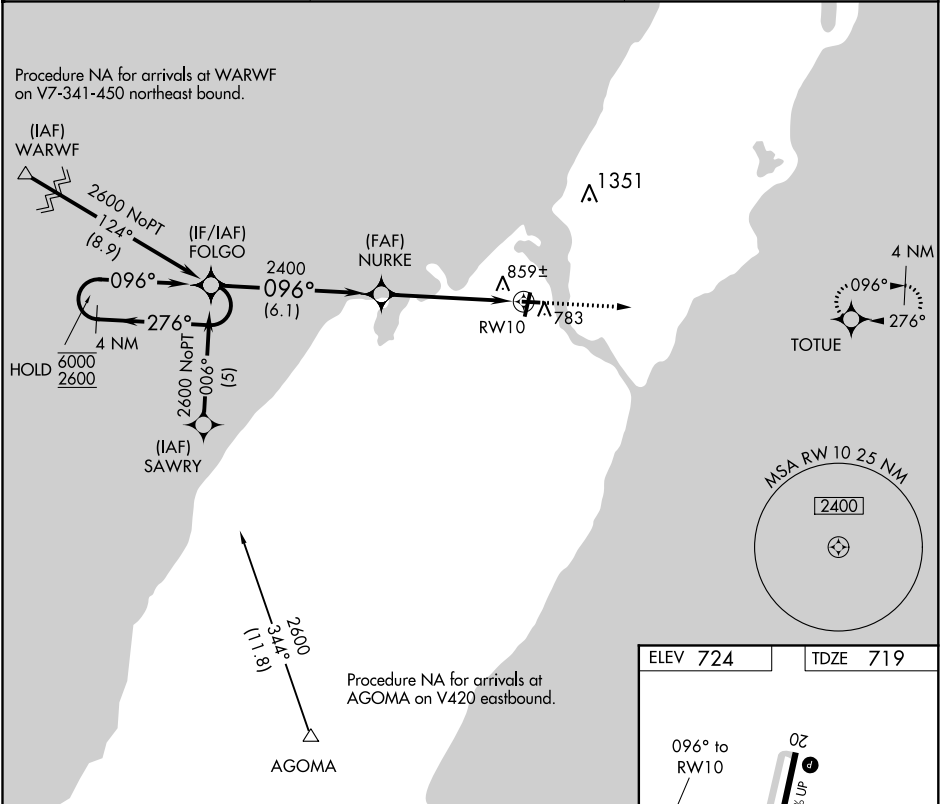


APP CRS	Rwy Idg	3199
096°	TDZE	719
	Apt Elev	724

RNAV (GPS) RWY 10
DOOR COUNTY CHERRYLAND (SUE)

RNP APCH. V A		MISSED APPROACH: Climb to 2600 direct TOTUE and hold.
AWOS-3PT 128.325	GREEN BAY APP CON ★ 119.25 338.2	UNICOM 122.7 (CTAF) 0



4 NM Holding Pattern				2600 ↑		TOTUE ✦	
6000 2600		←276° →096°		FOLGO		NURKE	
		096°		2400		1.2 NM to RW10	
		6.1 NM		3.04° TCH 34		RW10	
		3.9 NM		1.2			
CATEGORY	A	B	C	D			
RNAV MDA	1120-1 401 (400-1)			1120-1½ 401 (400-1½)		NA	
CIRCLING	1280-1 556 (600-1)			1280-1½ 556 (600-1½)		NA	

