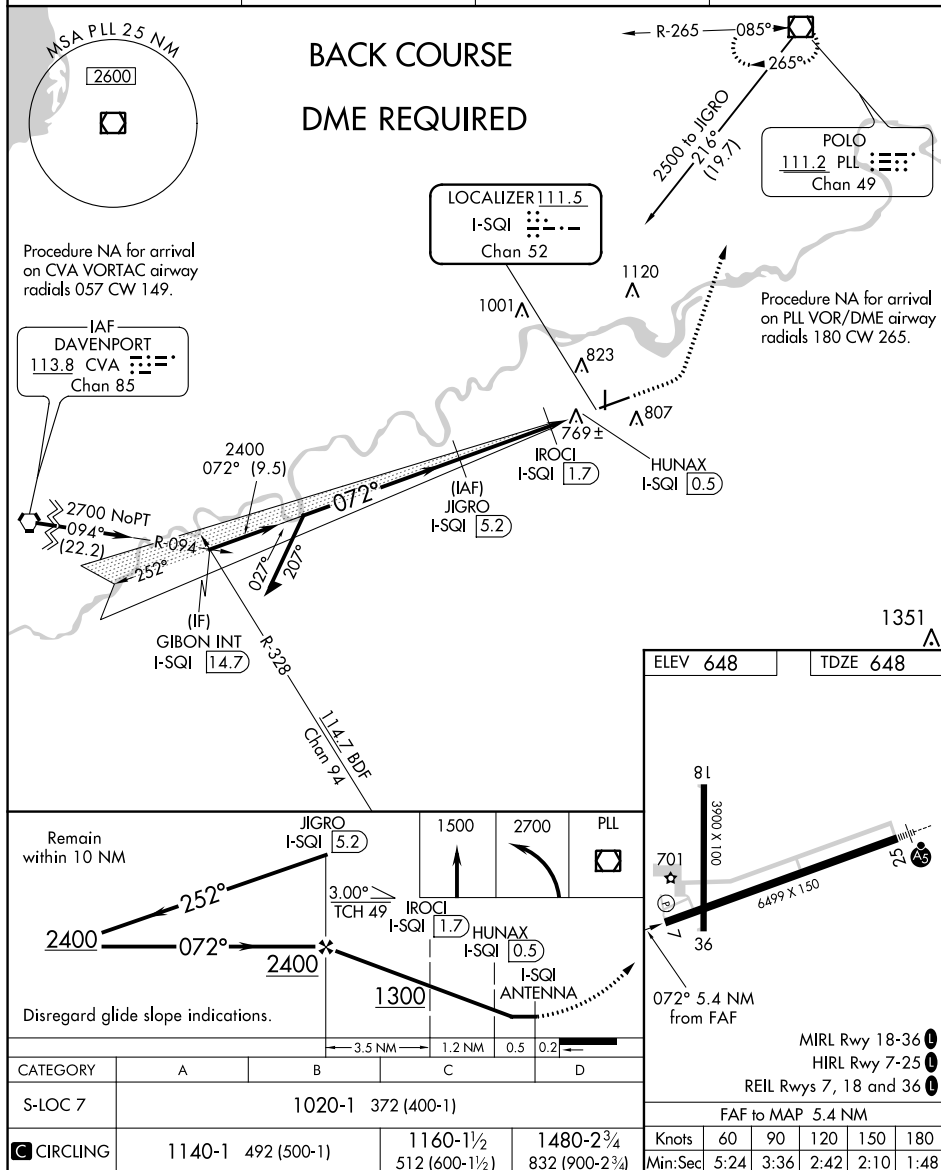


LOC BC RWY 7
EPH H BITTORF FIELD (SQI)

MISSED APPROACH: Climb to 1500 then climbing left turn to 2700 direct PLL VOR/DME and hold.

AWOS-3PT 119.175	ROCKFORD APP CON 126.0 327.0	CLNC DEL 128.0	UNICOM 123.0 (CTAF) 0
----------------------------	--	--------------------------	---------------------------------



WHITESIDE COUNTY AIRPORT-JOSEPH H BITTORF FIELD (SQI)
41°45'N-89°41'W LOC BC RWY 7

EC-3, 31 DEC 2020 to 28 JAN 2021