

LOC/DME I-SQI

111.5

Chan 52

APP CRS

252°

Rwy Idg

6499

TDZE

647

Apt Elev

648

WHITESIDE COUNTY

ILS or LOC RWY 25

AIRPORT-JOSEPH H BITTORF FIELD (SQI)

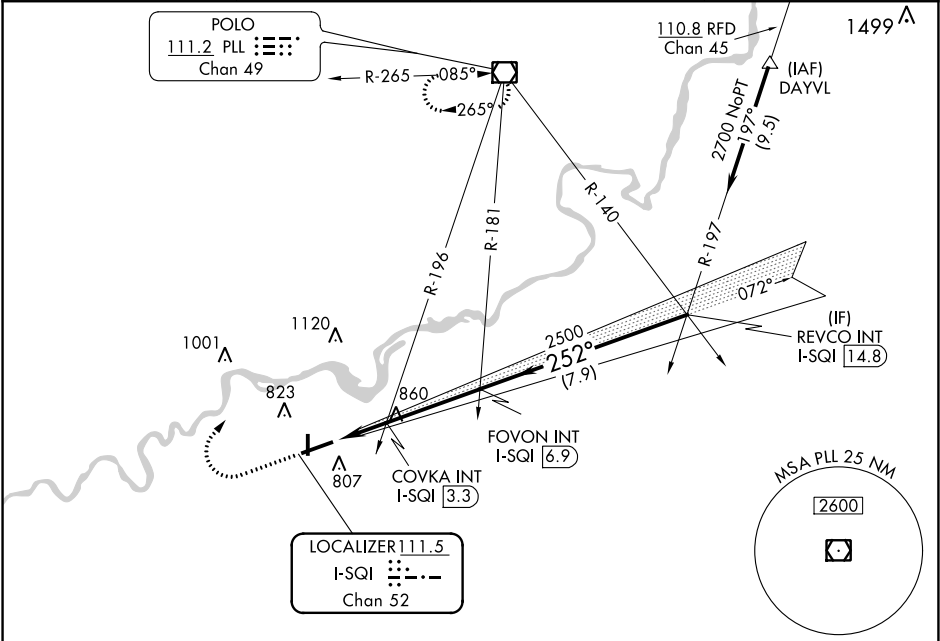
NA

Circling Rwy 36 NA at night.

MALSR

MISSED APPROACH: Climb to 2000 then climbing right turn to 2700 direct PLL VOR/DME and hold.

AWOS-3PT 119.175	ROCKFORD APP CON 126.0 327.0	CLNC DEL 128.0	UNICOM 123.0 (CTAF) 0
---------------------	---------------------------------	-------------------	--------------------------



ELEV 648

TDZE 647

2000

2700

PLL

FOVON INT I-SQI 6.9

REVCO INT I-SQI 14.8

COVKA INT I-SQI 3.3

I-SQI 1.2

I-SQI 2.6

2500

252°

2700

GS 3.00° TCH 54

\*LOC only.

1.3 NM

0.8 NM

3.6 NM

7.9 NM

CATEGORY	A	B	C	D
S-ILS 25	847-1/2 200 (200-1/2)			
S-LOC 25	1320-1/2 673 (700-1/2)		1320-1/2 673 (700-1/2)	
CIRCLING	1320-1 672 (700-1)		1320-2 672 (700-2)	1480-2 3/4 832 (900-2 3/4)
COVKA FIX MINIMUMS (DUAL VOR RECEIVERS OR DME REQUIRED)				
S-LOC 25	1120-1/2 473 (500-1/2)		1120-1 473 (500-1)	
CIRCLING	1140-1 492 (500-1)		1160-1/2 512 (600-1/2)	1480-2 3/4 832 (900-2 3/4)

STERLING ROCKFALLS, ILLINOIS

Amdt 11 19JUL18

WHITESIDE COUNTY AIRPORT-JOSEPH H BITTORF FIELD (SQI)

41°45'N-89°41'W

ILS or LOC RWY 25