

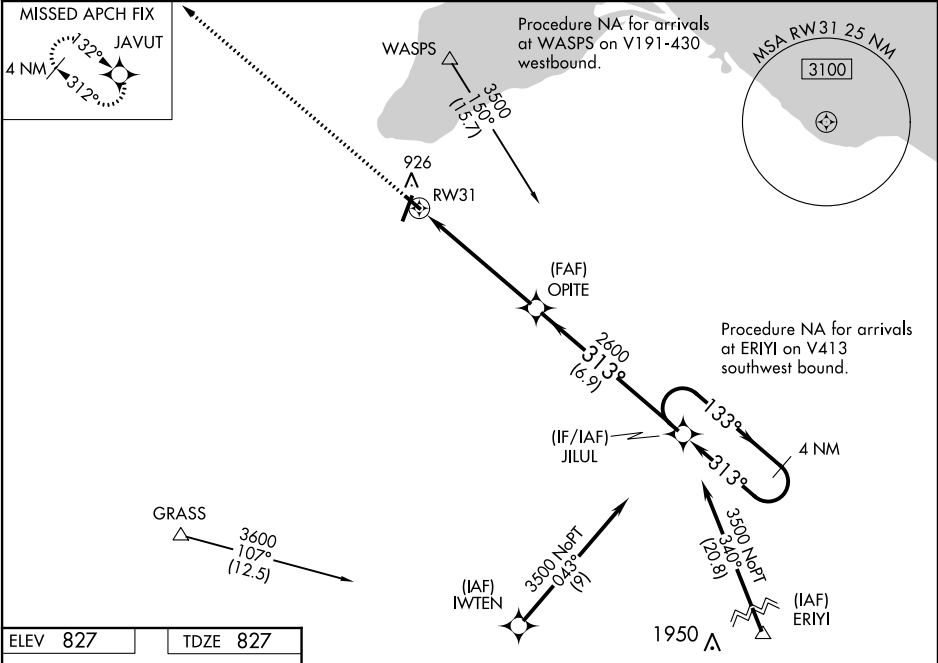
WAAS CH <b>65807</b> <b>W31A</b>	APP CRS <b>313°</b>	Rwy Idg TDZE <b>827</b> Apt Elev <b>827</b>
--	------------------------	---

RNAV (GPS) RWY 31  
JOHN F KENNEDY MEMORIAL (ASX)

**⚠** For uncompensated Baro-VNAV systems, LNAV/VNAV NA below -28°C (-18°F) or above 54°C (130°F). DME/DME RNP-0.3 NA. Helicopter visibility reduction below ¾ SM NA. Baro-VNAV and VDP NA when using Ironwood altimeter setting. When local altimeter setting not received, use Ironwood altimeter setting and increase all DAs 132 feet and all MDAs 140 feet; increase LPV all Cats and LNAV Cat C/D visibility ¾ mile, LNAV/VNAV all Cats and Circling Cat C/D visibility ½ mile.

**MISSED APPROACH:**  
Climb to 3500 direct JAVUT and hold.

ASOS <b>126.775</b>	MINNEAPOLIS CENTER <b>126.45 276.4</b>	GCO <b>122.25</b>	UNICOM <b>122.8 (CTAF) 0</b>
------------------------	---	----------------------	---------------------------------



ELEV 827      TDZE 827

**3500 JAVUT**

**\*LNAV only**

**\*1.2 NM to RW31**

**OPITE 2600**

**JILUL 2600**

**1.2 NM   4.3 NM   6.9 NM**

**4 NM Holding Pattern**

**GP 3.00° TCH 37**

CATEGORY	A	B	C	D
LPV DA	1077-7½		250 (300-¾)	
LNAV/VNAV DA	1125-1		298 (300-1)	
LNAV MDA	1240-1 413 (500-1)		1240-1¼ 413 (500-1¼)	
<b>CIRCLING</b>	1240-1 413 (500-1)	1280-1 453 (500-1)	1440-1¾ 613 (700-1¾)	1560-2¼ 733 (800-2¼)